



TOWN Profile

NORTH CENTRAL REGION OF CT

Capital Workforce Partners is one of five regional workforce development boards in the state, established under the federal Workforce Investment Act (WIA) of 1998 and reauthorized in 2014 under the Workforce Innovation and Opportunity Act (WIOA). Its mission is to leverage public and private resources to produce skilled workers for a competitive regional economy in 37 municipalities within North Central CT. A consortium of the region’s chief elected officials appoints representatives to the board of directors from private sector business, education, labor, and public groups.

Capital Workforce Partners’ investment in the North Central Region of CT in the 2019/2020 fiscal year was \$19,982,535 and served 15,152 individuals



ADULTS SERVED

13,201



Programs	Served
Self-Directed Career Services	11,823
WIOA/Dislocated Worker	1,542
JFES	2,272
National Dislocated Workers Grant	292
Opioid Grant	22
Jobs Funnel	61
Best Chance	125
Free to Succeed	130
REACH	224
MACH	58
MCJTP	23

*Overall counts have been unduplicated to account for co-enrollment in multiple program areas

YOUTH SERVED

2,033

Programs	Served
WIOA Youth	426
SYELP	1461
HSIP	213

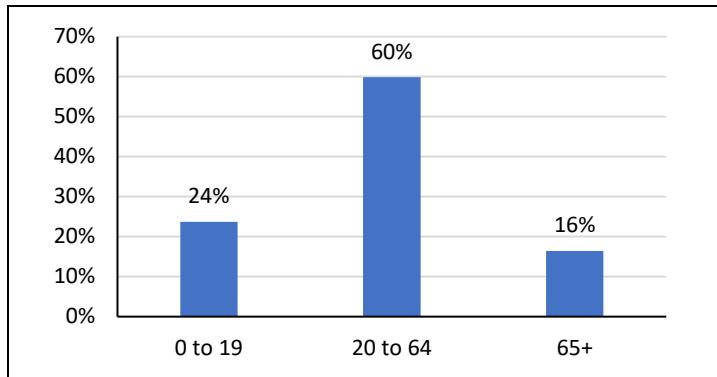


Capital Workforce Partners’ Business Services helps employers find the talent they need.

EMPLOYERS SERVED: 1,471

Demographic and Workforce Overview

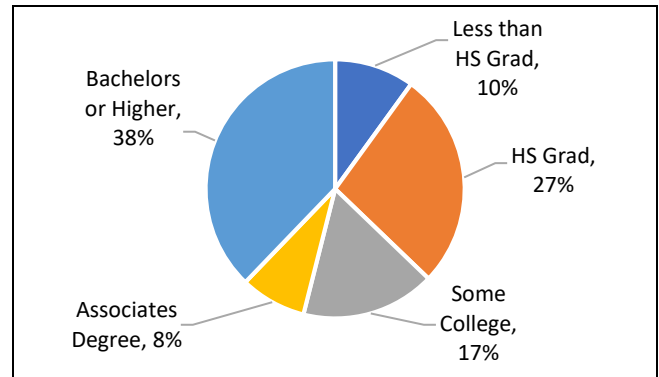
Age Distribution
2018



Source: US Census Bureau American Community Survey

The age distributions of the above age cohorts are in line with the State, as is the median age at 41.

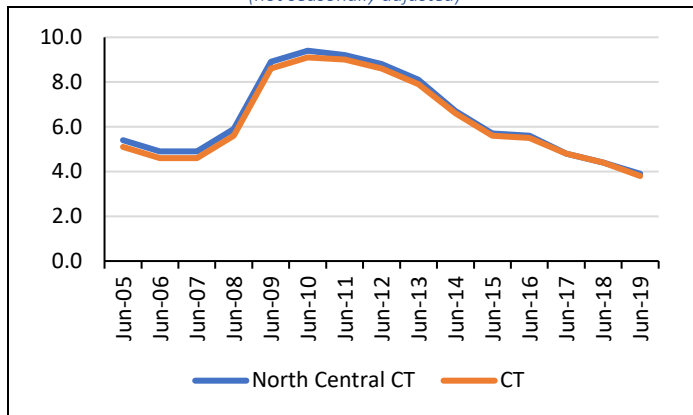
Educational Attainment (aged 25+)
2018



Source: US Census Bureau American Community Survey

Those with a Bachelors or Higher totaled 38 percent; this is one percentage point lower than the State.

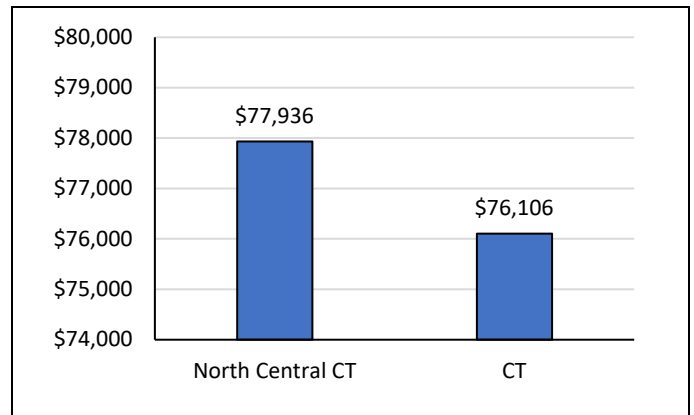
Unemployment Rate
June 2005 – June 2019
(not seasonally adjusted)



Source: CT Dept. of Labor

From 2005 to 2019, the unemployment rate in North Central CT has been relatively in line with that of the State.

Median Household Income
2018



Source: US Census Bureau American Community Survey

The median household income is \$77,936; this is almost \$2,000 more than the State.

Labor Market Profile

	North Central Connecticut	% of Connecticut	Connecticut
Total Population	1,005,135	28.2%	3,581,504
Labor Force	548,647	28.6%	1,918,550
Employed	530,449	28.6%	1,856,940
Unemployed	18,198	29.5%	61,610
Unemployment Rate	3.3%	NA	3.2%

Not seasonally adjusted

Sources: US Census Bureau; CT Dept. of Labor

Major Employers

State of Connecticut	St. Francis Hospital and Medical Center
Hartford Hospital	Aetna Inc.
United Technologies Corp.	Eversource Energy
The Travelers Cos. Inc.	Cigna Corp.
The Hartford Financial Services Group	ESPN

Source: CT Dept. of Labor; AtoZ Databases