



TOWN Profile

Andover

Capital Workforce Partners is one of five regional workforce development boards in the state, established under the federal Workforce Investment Act (WIA) of 1998 and reauthorized in 2014 under the Workforce Innovation and Opportunity Act (WIOA). Its mission is to leverage public and private resources to produce skilled workers for a competitive regional economy in 37 municipalities within North Central CT. A consortium of the region’s chief elected officials appoints representatives to the board of directors from private sector business, education, labor, and public groups.

Capital Workforce Partners’ investment in the North Central Region of CT in the 2019/2020 fiscal year was \$4,551 and served 25 individuals



ADULT SERVED

25

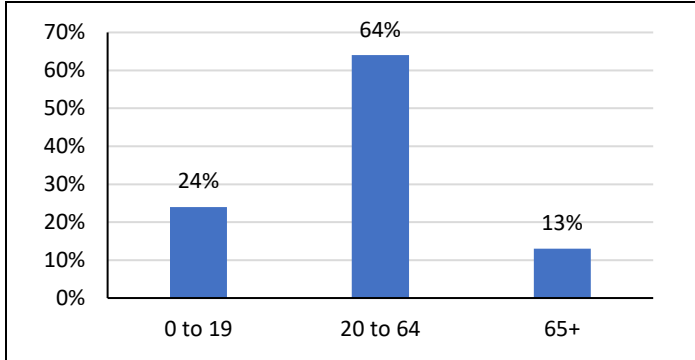


Programs	Served
Self-Directed Career Services	25
JFES	2

*Overall counts have been unduplicated to account for co-enrollment in multiple program areas

Demographic and Workforce Overview

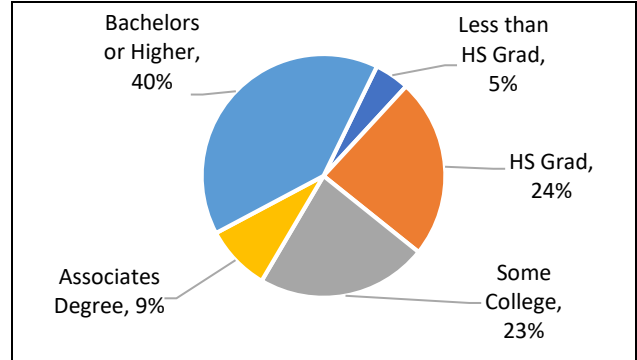
Age Distribution
2018



Source: US Census Bureau American Community Survey

The 20 to 64-year-old age group is four percentage points higher than the State, while the 65+ is three percentage points lower; at 45, its median age is four years higher than the State.

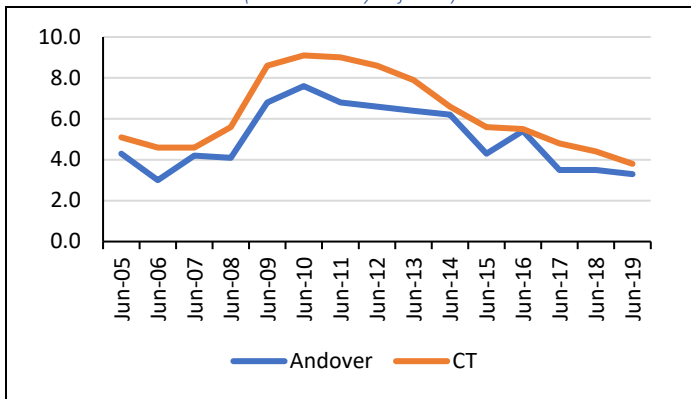
Educational Attainment (aged 25+)
2018



Source: US Census Bureau American Community Survey

Forty percent have a Bachelors or Higher which is in line with Tolland County and the State.

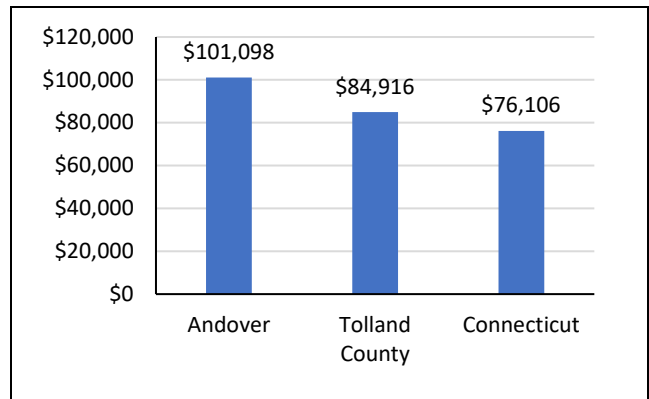
Unemployment Rate
June 2005 – June 2019
(not seasonally adjusted)



Source: CT Dept. of Labor

From 2005 to 2019, the unemployment rate in Andover has been 1.0 to 2.0 percentage points lower than that of the State.

Median Household Income
2018



Source: US Census Bureau American Community Survey

The median household income is \$101,098; this is over \$15,000 more the County and almost \$25,000 more than the State.

Labor Market Profile

	Andover	% of Tolland County	Tolland County
Total Population	3,223	2.1%	151,269
Labor Force	1,971	2.3%	87,268
Employed	1,917	2.3%	84,775
Unemployed	54	2.2%	2,493
Unemployment Rate	2.7%	NA	2.9%

Not seasonally adjusted

Sources: US Census Bureau; CT Dept. of Labor

Major Employers

Channel 3 Kids Camp	Andover Fire Department
Andover Elementary School	Flower Mate Supply
Michaels Produce	All Wood Flooring Plus Stairs

Source: AtoZ Databases