

Wethersfield Profile



Capital Workforce Partners is one of five regional workforce development boards in the state, established under the federal Workforce Investment Act (WIA) of 1998 and reauthorized in 2014 under the Workforce Innovation and Opportunity Act (WIOA). Its mission is to leverage public and private resources to produce skilled workers for a competitive regional economy in 37 municipalities within

North Central CT. A consortium of the region’s chief elected officials appoints representatives to the board of directors from private sector business, education, labor, and public groups.

Capital Workforce Partners’ investment in Wethersfield in the 2018/2019 fiscal year was \$208,581



Capital Workforce Partners oversees the operation of seven American Job Centers in the region in partnership with the State Dept. of Labor and other state agencies.

These centers provide job seekers with a full array of services including:

- ❖ Job referrals
- ❖ Career workshops
- ❖ Job development
- ❖ Online training
- ❖ Individual training scholarships
- ❖ Individualized career guidance
- ❖ Recruitment events

Adult Career Services

Services Overview 2018/2019 – 264 Individuals Served	
American Job Center Self-Directed Services	191 served
Workforce Innovation and Opportunity Act (WIOA) Adult or Laid Off Workers engaged in individualized career services	38 served
Jobs First individuals engaged in job search and subsidized employment activities	20 served
Individuals enrolled in occupational skills training (includes enrollment in specialty programs and sector-focused services detailed on page 2)	15 served

Youth Services

Capital Workforce Partners’ Youth Programs provide resources to prepare youth ages 14 to 24 for careers and self-sufficiency. Town wide services include:

7 Work Experiences and Training for Youth 14 - 24

Youth	2018-19 Served
Summer Youth	6
Opportunity Youth Programs	1
Hartford Student Internship Plan	0
YouthBuild New Britain	0

Specialty Services and Sector Focused Services

Services	Individuals Served
National Dislocated Worker Grant Provides training scholarships, on the training and support services for dislocated workers for careers in advanced manufacturing and healthcare.	2 served 0 employed
Best Chance – Second Chance I-Best Program Offers training (Construction, Culinary Arts, and Advanced Manufacturing), support services and pathways to sustainable careers for returning citizens (former offenders).	1 served 0 employed
Free to Succeed Retention Grant Provide services to assist former offenders become self-sufficient, gainfully employed and respected members of society.	2 served 2 employed
Healthcare Careers – Re-employment Alliance for Careers in Health provides funding to healthcare providers to support the hiring and training of healthcare workers, i.e., medical coders, IT professionals and nurses.	10 served 6 employed

Business Services

Capital Workforce Partners' Business Services helps employers find the talent they need.

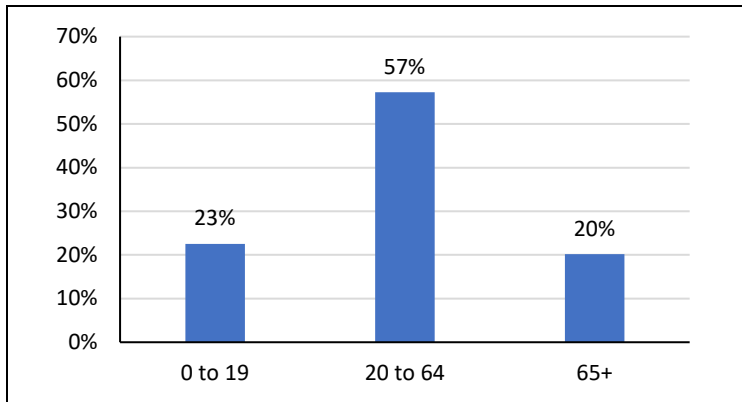
Capital Workforce Partners' Business Consultants:

- ❖ Are the conduit to workforce related resources
- ❖ Connect employers to a large pool of middle-skilled, job ready talent
- ❖ Serve as your workforce agent, expert and concierge
- ❖ Provide recruitment assistance, job match services, custom and timely labor market information, training and wage incentives when available.

27 employers in Wethersfield benefited from Capital Workforce Partners' Business Services.

Demographic and Workforce Overview

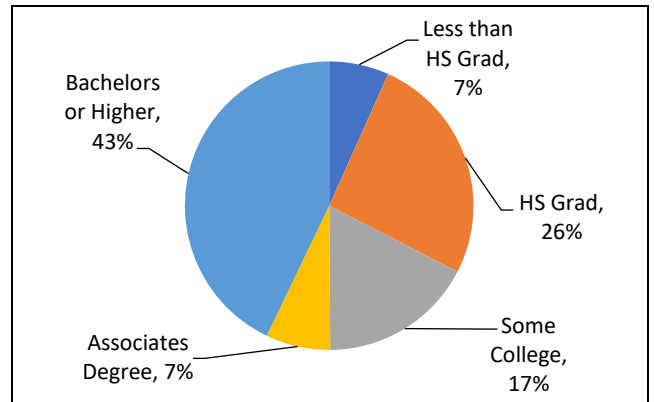
Age Distribution 2018



Source: US Census Bureau American Community Survey

The 20 to 64, age group is three percentage points lower than the State, while the 65+-year-old age group is four percentage points higher; at 45, its median age is four percentage points higher than the County and State.

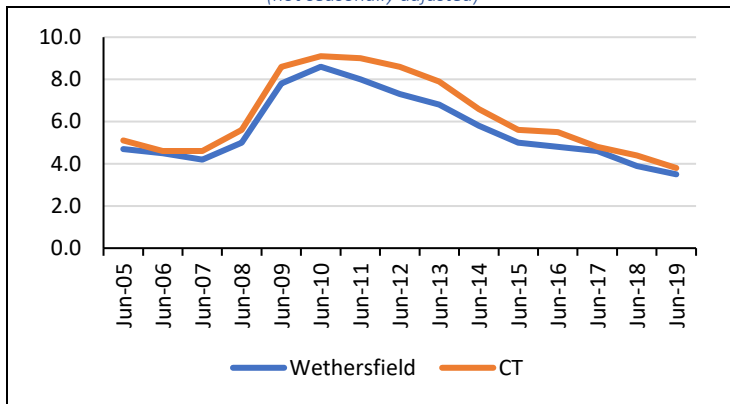
Educational Attainment (aged 25+) 2018



Source: US Census Bureau American Community Survey

Forty-three percent have a Bachelors or Higher which is four to five percentage points higher than the County and State.

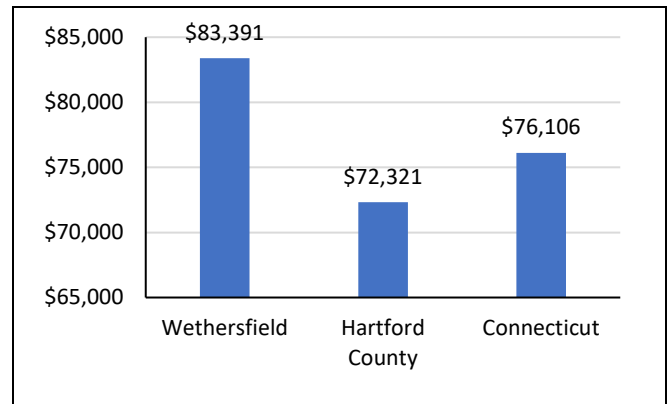
Unemployment Rate June 2005 – June 2019 (not seasonally adjusted)



Source: CT Dept. of Labor

From 2005 to 2019, the unemployment rate in Wethersfield has been up to 1.0 percentage point lower than that of the State.

Median Household Income 2018



Source: US Census Bureau American Community Survey

The median household income is \$83,391; this is over \$11,000 more the County and over \$7,000 more than the State.

Labor Market Profile

	Wethersfield	% of Hartford County	Hartford County
Total Population	26,267	2.9%	894,730
Employment	14,224	2.9%	483,503
Unemployment	13,836	3.0%	464,442
Unemployment Rate	388	2.0%	19,061
Employment	2.7%	NA	3.9%

Not seasonally adjusted

Sources: US Census Bureau; CT Dept. of Labor

Major Employers

Wethersfield Health Care Center	CT Department of Labor
Department of Corrections	Wethersfield Town
Patient's Choice Homecare	CBS Xerox
Hartford HealthCare at Home	Department of Motor Vehicles

Source: AtoZ Databases; CT Data Collaborative