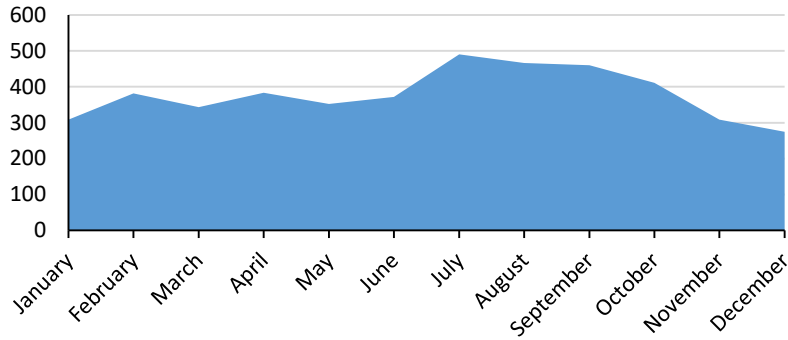


Construction Occupations in Hartford County

Construction Occupation Job Postings

January 2019 - December 2019



Top Company Postings

- Trueblue, Inc.
- HomeAdvisor, Inc.
- Tradesmen International, LLC
- Resource Options, Inc.
- My Electrical Career
- Aerotek, Inc.
- Centimark Corporation
- Aiello Home Services
- Hart Corporation
- Tsi, Incorporated

General Skills

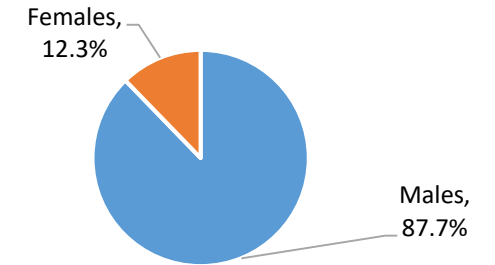
- Construction
- Valid Driver's License
- Communications
- Problem Solving
- Operations
- Management
- Customer Service
- Good Driving Record
- Detail Oriented
- Coordinating

Specialized Skills

- Carpentry
- Plumbing
- Roofing
- Electrical Wirings
- Electrical Systems
- Power Tool Operation
- HVAC
- Blueprinting
- Sheet Metal
- Renovation

Sample Construction Occupations	2019 Jobs	Annual Openings	Median Hourly Earnings	Typical Entry Level Education	Typical On-The-Job Training
Construction Laborers	3,383	401	\$21.56	No formal educational credential	Short (1 month)
Electricians	2,311	317	\$30.80	High school diploma or equivalent	Apprenticeship
Carpenters	2,321	241	\$24.96	High school diploma or equivalent	Apprenticeship
Plumbers, Pipefitters, and Steamfitters	1,515	223	\$28.60	High school diploma or equivalent	Apprenticeship
Supervisors of Construction Trades and Extraction Workers	1,595	180	\$36.15	High school diploma or equivalent	None
Heating, Air Conditioning, Refrigeration Mechanics and Installers	1,345	176	\$29.07	Postsecondary nondegree award	Long (12+ months)
Operating Engineers and Other Construction Equipment Operators	864	106	\$32.92	High school diploma or equivalent	Moderate (1-12 months)
Painters, Construction and Maintenance	970	98	\$20.95	No formal educational credential	Moderate (1-12 months)
Highway Maintenance Workers	718	83	\$26.78	High school diploma or equivalent	Moderate (1-12 months)
Sheet Metal Workers	392	53	\$25.41	High school diploma or equivalent	Apprenticeship
Construction and Building Inspectors	396	51	\$32.12	High school diploma or equivalent	Moderate (1-12 months)
Drywall and Ceiling Tile Installers	283	39	\$25.56	No formal educational credential	Moderate (1-12 months)
Roofers	321	38	\$25.79	No formal educational credential	Moderate (1-12 months)
Brickmasons and Blockmasons	259	31	\$26.42	High school diploma or equivalent	Apprenticeship
Cement Masons and Concrete Finishers	202	24	\$25.73	No formal educational credential	Moderate (1-12 months)
Hazardous Materials Removal Workers	174	22	\$17.39	High school diploma or equivalent	Moderate (1-12 months)

Construction Occupation Workers by Gender



Construction Occupation Workers by Age

