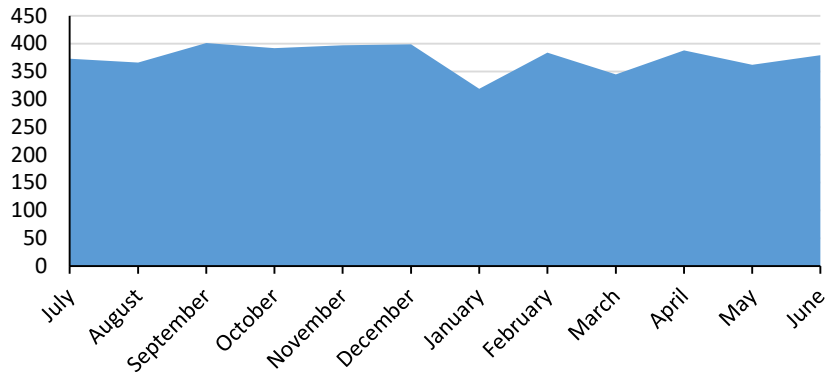


# Construction Occupations in Hartford County

## Construction Occupation Job Postings

July 2018 - June 2019



## Top Company Postings

- Trueblue, Inc.
- Homeadvisor, Inc.
- Tradesmen International, Inc.
- My Electrical Career
- Aerotek, Inc.
- Resource Options, Inc.
- Hart Corporation
- The Middlesex Corporation
- Sunpower Corporation
- Employer Provider Network, Inc.

## General Skills

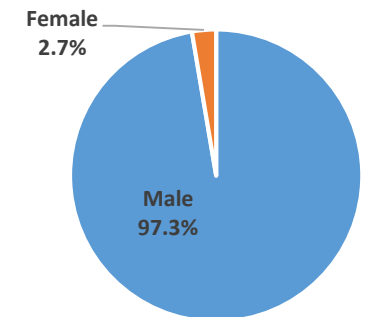
- Construction
- Valid Driver's License
- Management
- Communications
- Good Driving Record
- Operations
- Troubleshooting
- Customer Service
- Sales
- Problem Solving

## Specialized Skills

- Carpentry
- Roofing
- Electrical Systems
- Electrical Wiring
- Construction Management
- Plumbing
- Renovation
- Blueprinting
- Subcontracting
- Paneling

Sample Construction Occupations	2018 Jobs	Annual Openings	Median Hourly Earnings	Typical Entry Level Education	Typical On-The-Job Training
Construction Laborers	3,226	331	\$21.41	No formal educational credential	Short (1 month)
Electricians	2,256	257	\$30.72	High school diploma or equivalent	Apprenticeship
Carpenters	2,345	251	\$24.58	High school diploma or equivalent	Apprenticeship
Plumbers, Pipefitters, and Steamfitters	1,450	151	\$28.51	High school diploma or equivalent	Apprenticeship
Supervisors of Construction Trades and Extraction Workers	1,575	150	\$36.05	High school diploma or equivalent	None
Heating, Air Conditioning, Refrigeration Mechanics and Installers	1,297	124	\$28.99	Postsecondary nondegree award	Long (12+ months)
Operating Engineers, Other Construction Equipment Operators	853	92	\$32.88	High school diploma or equivalent	Moderate (1-12 months)
Painters, Construction and Maintenance	984	83	\$20.54	No formal educational credential	Moderate (1-12 months)
Highway Maintenance Workers	718	72	\$26.74	High school diploma or equivalent	Moderate (1-12 months)
Sheet Metal Workers	376	39	\$25.44	High school diploma or equivalent	Apprenticeship
Construction and Building Inspectors	392	43	\$31.98	High school diploma or equivalent	Moderate (1-12 months)
Roofers	313	30	\$25.52	No formal educational credential	Moderate (1-12 months)
Cement Masons and Concrete Finishers	197	22	\$25.65	No formal educational credential	Moderate (1-12 months)
Hazardous Materials Removal Workers	175	21	\$17.45	High school diploma or equivalent	Moderate (1-12 months)
Brickmasons and Blockmasons	247	21	\$26.49	High school diploma or equivalent	Apprenticeship
Glaziers	150	17	\$27.15	High school diploma or equivalent	Apprenticeship
Helpers--Electricians	106	15	\$22.19	High school diploma or equivalent	Short (1 month)
Drywall and Ceiling Tile Installers	271	23	\$25.22	No formal educational credential	Moderate (1-12 months)
Helpers--Pipelayers, Plumbers, Pipefitters, and Steamfitters	141	20	\$16.21	High school diploma or equivalent	Short (1 month)
Elevator Installers and Repairers	156	21	\$52.15	High school diploma or equivalent	Apprenticeship

## Construction Occupation Workers by Gender



## Construction Occupation Workers by Age

