



Capital Workforce Partners (CWP) is one of five regional workforce development boards in the state. Its purpose is to close the gap between job seeker skills and business needs, and its mission is to leverage public and private resources to produce skilled workers for a competitive regional economy in 37 municipalities within North Central CT.

Services Provided to South Windsor, Connecticut by Capital Workforce Partners July 1, 2016 – June 30, 2017

Adult Career Services

Services Overview 2016/2017 – 260 Individuals Served

Overview	Program(s)	Individuals Served
<ul style="list-style-type: none"> • CWP oversees the operation of four in the regional American Job Centers in partnership with the State Dept. of Labor and other state agencies. • These centers provide job seekers with a full array of career services. 	• Self-directed career services	195
	• Workforce Innovation and Opportunity Act (WIOA)	40
	• Jobs First (Welfare to Work)	21
	• Second Chance ex-offender re-entry program	1
	• REACH (H1B)	1
	• STEP UP	1
	• Jobs Funnel	1

Business Services

Services Overview 2016/2017 – 17 Businesses Served

Overview	Partnership Sector Focus	Businesses Receiving Service*
<ul style="list-style-type: none"> • Business Services helps businesses find the talent they need by connecting businesses to a large pool of job-ready talent, and act as a conduit to workforce related resources. • Employer-focused programs and services help businesses find the skilled people they need to help support and/or grow their business. 	<ul style="list-style-type: none"> • CWP convenes partnerships comprised of business leaders in three key sectors: healthcare, manufacturing, and construction. • These business-led groups ensure that CWP and the workforce system are preparing job seekers to meet current and future business needs. 	17

* Includes businesses that have received hiring subsidies and hired CWP's customers.

Youth Services

Capital Workforce Partners' Youth Programs provide resources to prepare youth and young adults ages 14 to 24 for careers and self-sufficiency through work experiences and training.

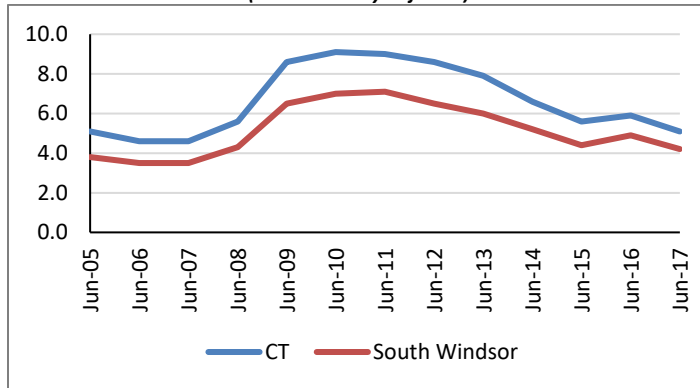
Services Overview 2016/2017 – 3 Youth Served

Program	Number Served
• Summer Youth/Year-Round Internship Program	2
• Opportunity Youth Programs	1

Demographic and Workforce Overview

Unemployment Rates And Median Household Income

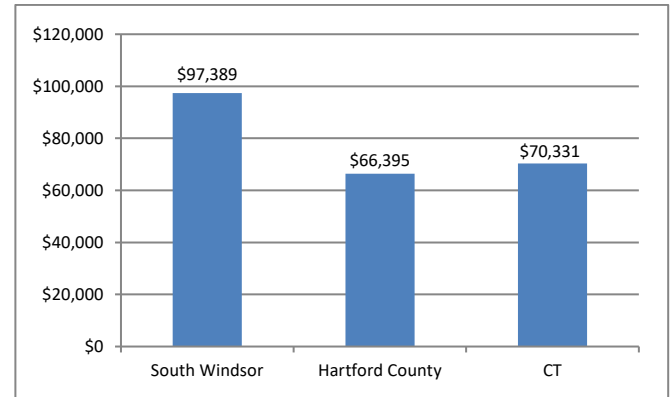
**Unemployment Rate
2005 – June 2017**
(not seasonally adjusted)



Source: CT Dept. of Labor

Over the past twelve years, from 2005 to 2017, the unemployment rate in South Windsor has been consistently about one to two percentage points lower than that of the state.

**Median Household Income
2015**



Source: US Census Bureau American Community Survey

The median household income is \$97,389; this is nearly \$31,000 more than the county and over \$27,000 more than the state.

Labor Market Profile – June, 2017

	South Windsor	% of Hartford County	Hartford County
Total Population	25,806	2.9%	896,943
Labor Force	14,388	3.0%	486,467
Employed	13,778	3.0%	460,606
Unemployed	610	2.4%	25,861
Unemployment Rate (1)	4.2%	NA	5.3%
Labor Force Participation Rate	69.1%	NA	67.1%

(1) not seasonally adjusted

Source: US Census Bureau; CT Dept. of Labor

Major Employers

Macy's	DST Output
Electro-Methods Inc.	South Windsor High School
Timothy Edwards Middle School	Super Stop & Shop
Paradigm Healthcare Center	Tek Supply
Ticket Network Inc.	Capewell Components Co. LLC
Coburn Technologies Inc.	Rockville Financial Inc.

Source: CT Dept. of Labor; CT Data Collaborative



Capital Workforce Partners - One Union Place - Hartford, CT 06103
www.capitalworkforce.org