



Capital Workforce Partners (CWP) is one of five regional workforce development boards in the state. Its purpose is to close the gap between job seeker skills and business needs, and its mission is to leverage public and private resources to produce skilled workers for a competitive regional economy in 37 municipalities within North Central CT.

**Services Provided to Suffield, Connecticut by Capital Workforce Partners
July 1, 2016 – June 30, 2017**

Adult Career Services

Services Overview 2016/2017 – 120 Individuals Served

Overview	Program(s)	Individuals Served
<ul style="list-style-type: none"> CWP oversees the operation of four in the regional American Job Centers in partnership with the State Dept. of Labor and other state agencies. These centers provide job seekers with a full array of career services. 	<ul style="list-style-type: none"> Self-directed career services Workforce Innovation and Opportunity Act (WIOA) Jobs First (Welfare to Work) REACH (H1B) Mortgage Crisis Job Training Program 	87 17 14 1 1

Business Services

Services Overview 2016/2017 – 4 Businesses Served

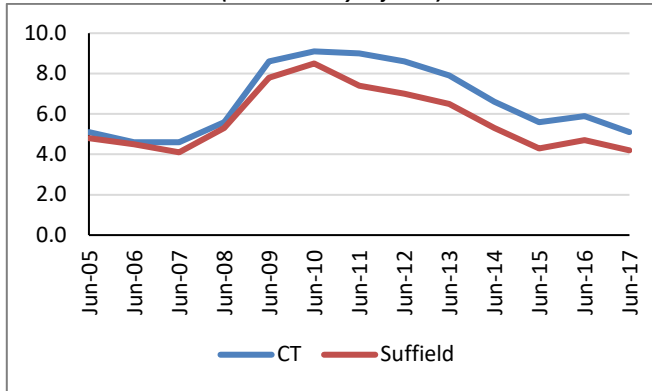
Overview	Partnership Sector Focus	Businesses Receiving Service*
<ul style="list-style-type: none"> Business Services helps businesses find the talent they need by connecting businesses to a large pool of job-ready talent, and act as a conduit to workforce related resources. Employer-focused programs and services help businesses find the skilled people they need to help support and/or grow their business. 	<ul style="list-style-type: none"> CWP convenes partnerships comprised of business leaders in three key sectors: healthcare, manufacturing, and construction. These business-led groups ensure that CWP and the workforce system are preparing job seekers to meet current and future business needs. 	4

* Includes businesses that have received hiring subsidies and hired CWP's customers.

Demographic and Workforce Overview

Unemployment Rates and Median Household Income

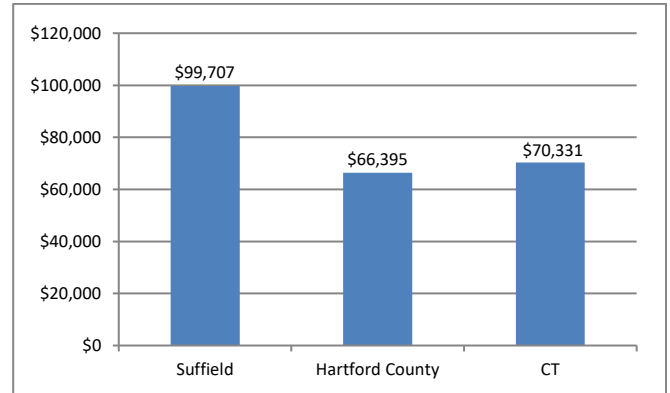
**Unemployment Rate
2005 – June 2017**
(not seasonally adjusted)



Source: CT Dept. of Labor

Over the past twelve years, from 2005 to 2017, the unemployment rate in Suffield has been consistently about 1.0 to 1.5 percentage points lower than that of the state.

**Median Household Income
2015**



Source: US Census Bureau American Community Survey

The median household income is \$99,707; this is over \$33,000 more than the county and over \$29,000 more than the state.

Labor Market Profile – June 2017

	Suffield	% of Hartford County	Hartford County
Total Population	15,657	1.7%	896,943
Labor Force	7,771	1.6%	486,467
Employed	7,444	1.6%	460,606
Unemployed	327	1.3%	25,861
Unemployment Rate (1)	4.2%	NA	5.3%
Labor Force Participation Rate	57.8%	NA	67.1%

(1) not seasonally adjusted

Source: US Census Bureau; CT Dept. of Labor

Major Employers

Corrections Dept.	C & S Wholesale Grocers Inc.
Robert W Baker Nursery Inc.	Kongsberg Automotive
Suffield House	Suffield Public Schools

Source: CT Dept. of Labor; CT Data Collaborative



Capital Workforce Partners - One Union Place - Hartford, CT 06103
www.capitalworkforce.org