



Capital Workforce Partners (CWP) is one of five regional workforce development boards in the state. Its purpose is to close the gap between job seeker skills and business needs, and its mission is to leverage public and private resources to produce skilled workers for a competitive regional economy in 37 municipalities within North Central CT.

**Services Provided to East Hartford, Connecticut by Capital Workforce Partners
July 1, 2016 – June 30, 2017**

Adult Career Services

Services Overview 2016/2017 – 1,324 Individuals Served

| Overview | Program(s) | Individuals Served |
|---|---|--------------------|
| <ul style="list-style-type: none"> CWP oversees the operation of four in the regional American Job Centers in partnership with the State Dept. of Labor and other state agencies. These centers provide job seekers with a full array of career services. | • Self-directed career services | 782 |
| | • Workforce Innovation and Opportunity Act (WIOA) | 125 |
| | • Jobs First (Welfare to Work) | 357 |
| | • Second Chance ex-offender re-entry program | 25 |
| | • REACH (H1B) | 12 |
| | • STEP UP | 7 |
| | • Jobs Funnel | 15 |
| | • Mortgage Crisis Job Training Program | 1 |

Business Services

Services Overview 2016/2017 – 33 Businesses Served

| Overview | Partnership Sector Focus | Businesses Receiving Service* |
|---|---|-------------------------------|
| <ul style="list-style-type: none"> Business Services helps businesses find the talent they need by connecting businesses to a large pool of job-ready talent, and act as a conduit to workforce related resources. Employer-focused programs and services help businesses find the skilled people they need to help support and/or grow their business. | <ul style="list-style-type: none"> CWP convenes partnerships comprised of business leaders in three key sectors: healthcare, manufacturing, and construction. These business-led groups ensure that CWP and the workforce system are preparing job seekers to meet current and future business needs. | 33 |

* Includes businesses that have received hiring subsidies and hired CWP's customers.

Youth Services

Capital Workforce Partners' Youth Programs provide resources to prepare youth and young adults ages 14 to 24 for careers and self-sufficiency through work experiences and training.

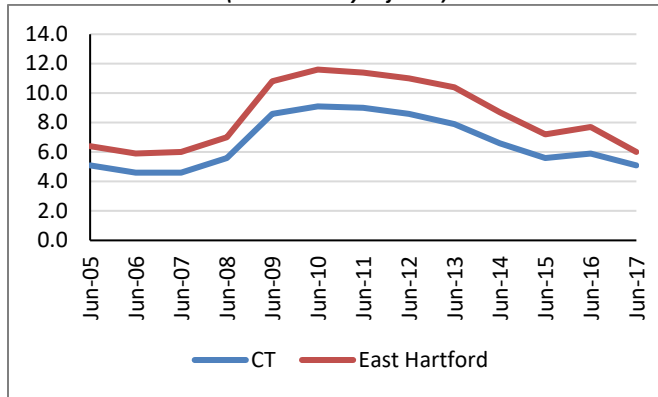
Services Overview 2016/2017 – 143 Youth Served

| Program | Number Served |
|--|---------------|
| • Summer Youth/Year-Round Internship Program | 123 |
| • Opportunity Youth Programs | 20 |

Demographic and Workforce Overview

Unemployment Rates And Median Household Income

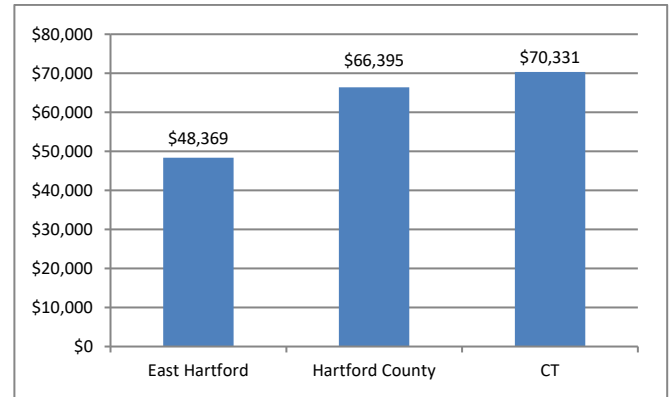
**Unemployment Rate
2005 – June 2017**
(not seasonally adjusted)



Source: CT Dept. of Labor

Over the past twelve years, from 2005 to 2017, the unemployment rate in East Hartford has been consistently about 1.5 to 2.5 percentage points higher than that of Connecticut.

**Median Household Income
2015**



Source: US Census Bureau American Community Survey

Median household income is \$48,369; this is \$18,026 less than that of Hartford County, and \$21,962 less than that of Connecticut.

Labor Market Profile – June, 2017

| | East Hartford | % of Hartford County | Hartford County |
|--------------------------------|---------------|----------------------|-----------------|
| Total Population | 51,137 | 5.7% | 896,943 |
| Labor Force | 27,921 | 5.7% | 486,467 |
| Employed | 26,252 | 5.7% | 460,606 |
| Unemployed | 1,669 | 6.5% | 25,861 |
| Unemployment Rate (1) | 6.0% | NA | 5.3% |
| Labor Force Participation Rate | 68.6% | NA | 67.1% |

(1) not seasonally adjusted

Source: US Census Bureau; CT Dept. of Labor

Major Employers

| | |
|-------------------------------------|-------------------------------|
| Pratt and Whitney | Clearwater Paper Corp. |
| Unicco Service | Connecticut Natural Gas Corp. |
| Goodwin College | GH Berlin-Windward |
| United Technologies Research Center | Computer Sciences Corp. |
| Nursing Services Inc. | Dunn Paper |
| East Hartford High School | ShopRite |

Source: CT Dept. of Labor; CT Data Collaborative



Capital Workforce Partners - One Union Place - Hartford, CT 06103
www.capitalworkforce.org