

City of Hartford Profile



Capital Workforce Partners is one of five regional workforce development boards in the state, established under the federal Workforce Investment Act (WIA) of 1998 and reauthorized in 2014 under the Workforce Innovation and Opportunity Act (WIOA). Its mission is to leverage public and private resources to produce skilled workers for a competitive regional economy in 37 municipalities within North Central CT. A consortium of the region’s chief elected officials appoints representatives to the board of directors from private sector business, education, labor, and public groups.

Services Provided to Hartford, Connecticut by Capital Workforce Partners July 1, 2015 – June 30, 2016

Adult Career Services



Capital Workforce Partners oversees the operation of four American Job Centers in the region in partnership with the State Dept. of Labor and other state agencies.

These centers provide job seekers with a full array of services including:

- ❖ Job referrals
- ❖ Career workshops
- ❖ Job development
- ❖ Online training
- ❖ Individual training scholarships
- ❖ Individualized career guidance
- ❖ Recruitment events

Services Overview 2015/2016 – 5,708 Individuals Served	
American Job Center Services, including Workshops	4,189 customer visits for self-service, workshops or 1-1 support
Adult Individual Training Accounts	26 individuals received Individual Training Scholarships
Workforce Innovation and Opportunity Act (WIOA) Low Income Adult or Laid Off Workers	269 registered customers
Jobs First individuals engaged in job search and subsidized employment activities	1,250 participants

Youth Services

Capital Workforce Partners’ Youth Programs provide resources to prepare youth ages 14 to 24 for careers and self-sufficiency. Town wide services include:

1,888 Work Experiences and Training for Youth 14 - 24

Youth	2015-16 Served
Summer Youth	1,453
Opportunity Youth Programs	236
Hartford Student Internship Plan	199

Specialty Services and Sector Focused Services

Mortgage Crisis Job Training Program

Helps borrowers who are behind on their mortgage payments keep their homes, and helps them gain the skills they need to earn more money and become financially stable.

- ❖ 22 individuals received training scholarships.

Healthcare Careers – Health Careers and REACH Projects

The Health Careers and REACH Projects provide funding to healthcare providers to support the hiring and training of healthcare workers, i.e., medical coders, IT professionals, and nurses.

- ❖ 1 Hartford healthcare employer benefitted from Healthcare Careers projects and employed area healthcare residents.

Construction / Manufacturing - Jobs Funnel

The Jobs Funnel is a pre-employment preparation and job training service for area residents seeking employment in the construction fields, and serves as the model “Funnel” program for the state.

- ❖ 150 participants.
- ❖ 24 placed into employment.

STEP UP - Manufacturing and Subsidized Employment

Provides wage incentives for hiring unemployed adults. There is also a STEP UP program for Veterans.

- ❖ 61 previously unemployed Hartford job seekers were hired by area companies.
- ❖ 22 Hartford companies benefitted from wage incentives for the first 6 months employment; employees were from area towns.

Business Services

Capital Workforce Partners’ Business Services helps employers find the talent they need. Our Business Consultants:

- ❖ Are the conduit to workforce related resources
- ❖ Connect employers to a large pool of middle-skilled, job ready talent
- ❖ Serve as your workforce agent, expert and concierge

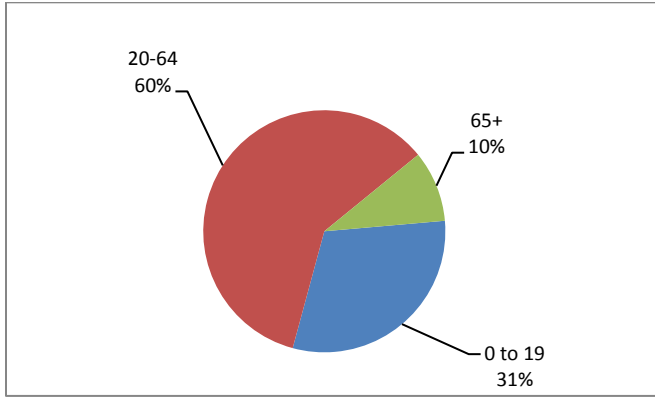
They provide recruitment assistance, job match services, custom and timely labor market information, training and wage incentives when available.

- ❖ 29 employers in Hartford were engaged by Capital Workforce Partners’ Business Services.
- ❖ 17 businesses were assisted with job placement.

Demographic and Workforce Overview

AGE DISTRIBUTION AND DEMOGRAPHICS

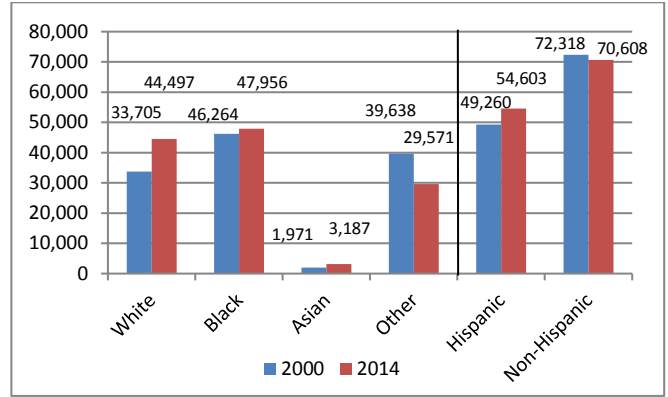
**Age Distribution
2014**



Source: US Census Bureau American Community Survey

Hartford is younger than the county and state; compared to the county and state, youth (0-19) are five percentage points higher, while the older population (65+) is five percentage points lower. At 30, the median age is ten years younger than both the county and state.

**Racial/Ethnic Composition Change
2000 to 2014**

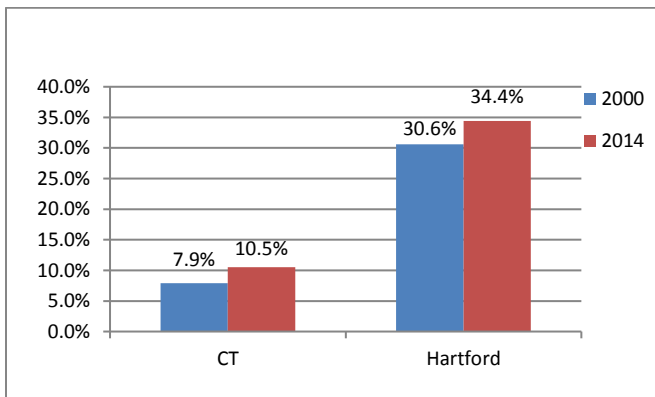


Source: US Census Bureau American Community Survey

Since 2000, the White population has increased by nearly 10,000 and the Hispanic population by just over 5,000. The Other category, those not identifying as exclusively White, Black, or Asian, decreased by 10,000.

POVERTY AND EDUCATIONAL ATTAINMENT

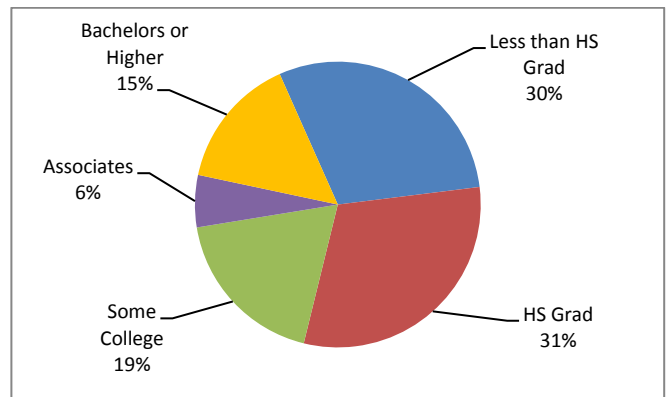
**Percent of Individuals with Income Below
Poverty Level
2000 to 2014**



Source: US Census Bureau American Community Survey

Over 34 percent of Hartford's individuals are in poverty; this is significantly higher than the state at over 23 percentage points higher. Hartford's poverty has increased by nearly three percentage points for individuals since 2000.

**Educational Attainment (aged 25+)
2014**

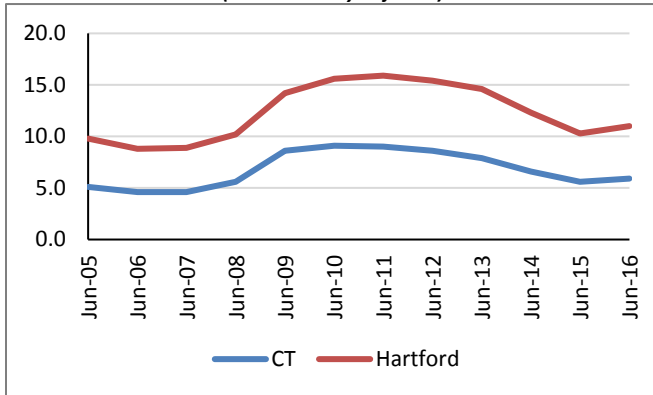


Source: US Census Bureau American Community Survey

Those with a Bachelors or Higher totaled 15 percent; this is 22 percentage points less than the state. Those with less than a high school diploma are nearly 20 percentage points higher than the county and state.

UNEMPLOYMENT RATES AND MEDIAN HOUSEHOLD INCOME

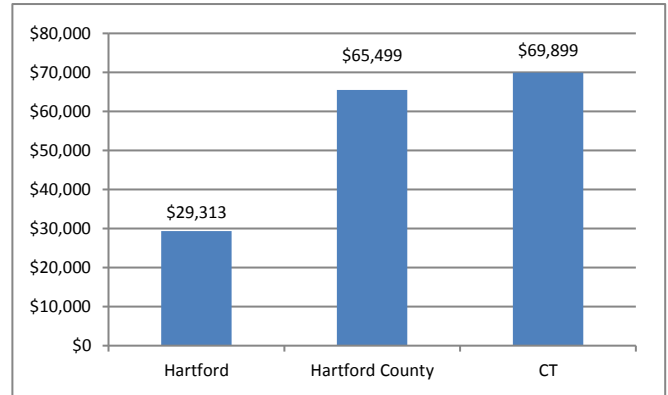
Unemployment Rate
2005 – June 2016
(not seasonally adjusted)



Source: CT Dept. of Labor

From 2005 to 2016, the unemployment rate in Hartford has been consistently about four to seven percentage points higher than that of Connecticut.

Median Household Income
2014



Source: US Census Bureau American Community Survey

At \$29,313, Hartford's median household income is less than half than that of the county and state.

LABOR MARKET PROFILE – June, 2016

	Hartford	% of Hartford County	Hartford County
Total Population	125,211	14.0%	897,374
Labor Force	54,686	11.4%	477,895
Employed	48,683	10.9%	447,905
Unemployed	6,003	20.0%	29,990
Unemployment Rate (1)	11.0%	NA	6.3%

(1) not seasonally adjusted

Source: US Census Bureau; CT Dept. of Labor

MAJOR EMPLOYERS

Northeast Utilities/Eversource	Aetna Inc.
Hartford Financial Services Group Inc.	St Francis Hospital & Medical Center
Travelers Indemnity Corp.	City of Hartford
Mt Sinai Rehabilitation Hospital	Institute of Living
Hartford Hospital	Lincoln Waste Solutions
Rexel	Walmart Supercenter
First Transit Inc.	FOX61/WCCT
Lincoln National Life Insurance Co.	Capital Community College
Trinity College	

Source: CT Dept. of Labor; CT Data Collaborative



Capital Workforce Partners - One Union Place - Hartford, CT 06103
www.capitalworkforce.org