



**Capital Workforce Partners** is one of five regional workforce development boards in the state, established under the federal Workforce Investment Act (WIA) of 1998 and reauthorized in 2014 under the Workforce Innovation and Opportunity Act (WIOA). Its mission is to leverage public and private resources to produce skilled workers for a competitive regional economy in 37 municipalities within North Central CT. A consortium of the region’s chief elected officials appoints representatives to the board of directors from private sector business, education, labor, and public groups.

**Services Provided to Marlborough, Connecticut by Capital Workforce Partners  
July 1, 2015 – June 30, 2016**

**Adult Career Services**



Capital Workforce Partners oversees the operation of four American Job Centers in the region in partnership with the State Dept. of Labor and other state agencies.

These centers provide job seekers with a full array of services including:

- ❖ Job referrals
- ❖ Career workshops
- ❖ Job development
- ❖ Online training
- ❖ Individual training scholarships
- ❖ Individualized career guidance
- ❖ Recruitment events

Services Overview 2015/2016 – 22 Individuals Served	
American Job Center Services, including Workshops	22 customer visits for self-service, workshops or 1-1 support
Adult Individual Training Accounts	1 individual received an Individual Training Scholarship
Workforce Innovation and Opportunity Act (WIOA) Low Income Adult or Laid Off Workers	4 registered customers
Jobs First individuals engaged in job search and subsidized employment activities	2 participants

**Specialty Services and Sector Focused Services**

**Mortgage Crisis Job Training Program**

Helps borrowers who are behind on their mortgage payments keep their homes, and helps them gain the skills they need to earn more money and become financially stable.

- ❖ 2 individuals received training scholarships.

**Healthcare Careers – Health Careers and REACH Projects**

The Health Careers and REACH Projects provide funding to healthcare providers to support the hiring and training of healthcare workers, i.e., medical coders, IT professionals and nurses.

**Construction / Manufacturing - Jobs Funnel**

The Jobs Funnel is a pre-employment preparation and job training service for area residents seeking employment in the construction fields, and serves as the model “Funnel” program for the state.

- ❖ 1 participant.
- ❖ 1 placed into employment.

**STEP UP - Manufacturing and Subsidized Employment**

Provides wage incentives for hiring unemployed adults. There is also a STEP UP program for Veterans.

## ***Business Services***

Capital Workforce Partners' Business Services helps employers find the talent they need. Our Business Consultants:

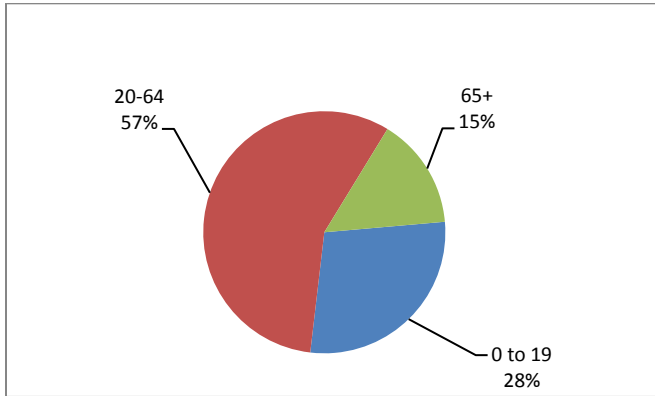
- ❖ Are the conduit to workforce related resources
- ❖ Connect employers to a large pool of middle-skilled, job ready talent
- ❖ Serve as your workforce agent, expert and concierge

They provide recruitment assistance, job match services, custom and timely labor market information, training and wage incentives when available.

# Demographic and Workforce Overview

## AGE DISTRIBUTION AND DEMOGRAPHICS

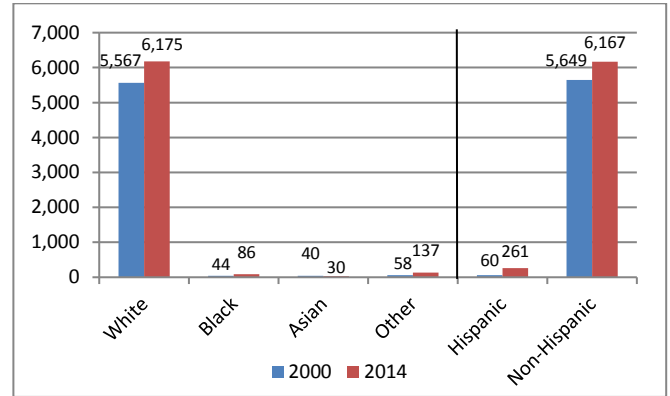
**Age Distribution  
2014**



Source: US Census Bureau American Community Survey

The age distribution of the working population (20-64) in Marlborough is slightly lower than Hartford County and the state by about three percentage points. At 45, the median age is about five years older than the county and state.

**Racial/Ethnic Composition Change  
2000 to 2014**

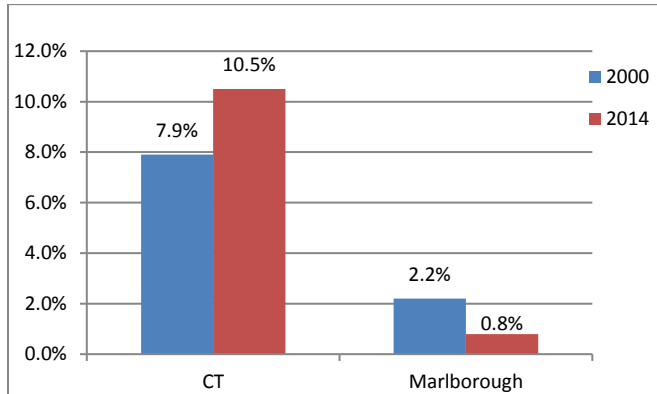


Source: US Census Bureau American Community Survey

The population is predominately White and Non-Hispanic. Since 2000, the total population increased by approximately 13 percent.

## POVERTY AND EDUCATIONAL ATTAINMENT

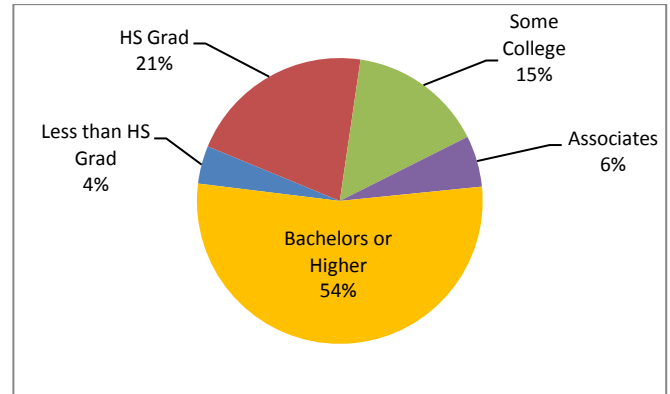
**Percent of Individuals with Income Below  
Poverty Level  
2000 to 2014**



Source: US Census Bureau American Community Survey

The percent in poverty in Marlborough is significantly less than the state for Individuals. While poverty has increased in the state, it has decreased in Marlborough.

**Educational Attainment (aged 25+)  
2014**

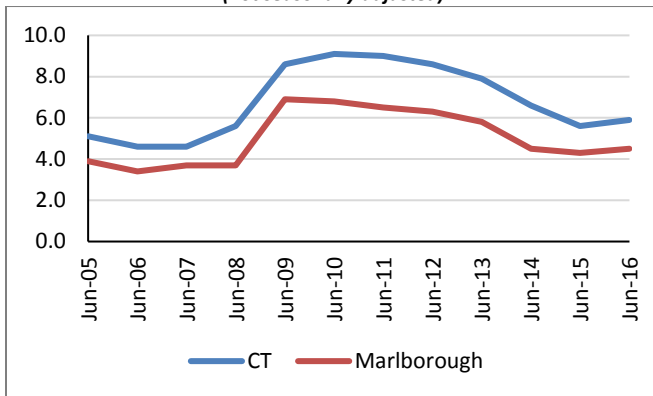


Source: US Census Bureau American Community Survey

Fifty-four percent have a Bachelors or Higher; this is 18 percentage points higher than the county and 17 percentage points higher than the state.

## UNEMPLOYMENT RATES AND MEDIAN HOUSEHOLD INCOME

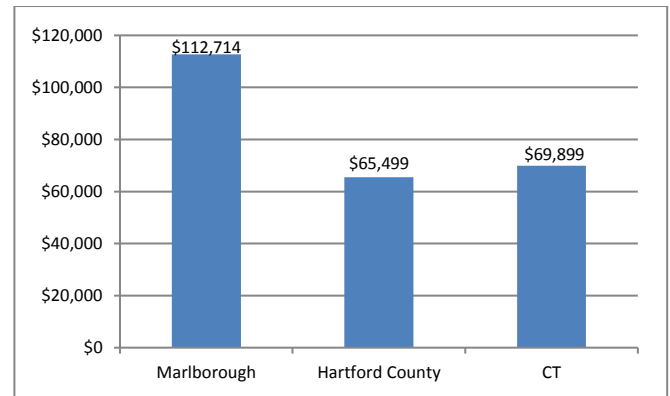
**Unemployment Rate**  
2005 – June 2016  
(not seasonally adjusted)



Source: CT Dept. of Labor

Over the past eleven years, from 2005 to 2016, the unemployment rate in Marlborough has been consistently about one to two percentage points lower than that of the state.

**Median Household Income**  
2014



Source: US Census Bureau American Community Survey

The median household income is \$112,714; this is over \$47,000 more than the county and over \$42,000 more than the state.

## LABOR MARKET PROFILE – June, 2016

	Marlborough	% of Hartford County	Hartford County
Total Population	6,428	0.7%	897,374
Labor Force	3,594	0.8%	477,895
Employed	3,433	0.8%	447,905
Unemployed	161	0.5%	29,990
Unemployment Rate (1)	4.5%	NA	6.3%

(1) not seasonally adjusted

Source: US Census Bureau; CT Dept. of Labor

## MAJOR EMPLOYERS

Marlborough Health Care Center	Marlborough School District
Schneider Electric	Elmer Thienes Mary Hall Elementary School
Middlesex Hospital Radiology	Diversified Corp.

Source: CT Dept. of Labor; CT Data Collaborative



Capital Workforce Partners - One Union Place - Hartford, CT 06103  
[www.capitalworkforce.org](http://www.capitalworkforce.org)