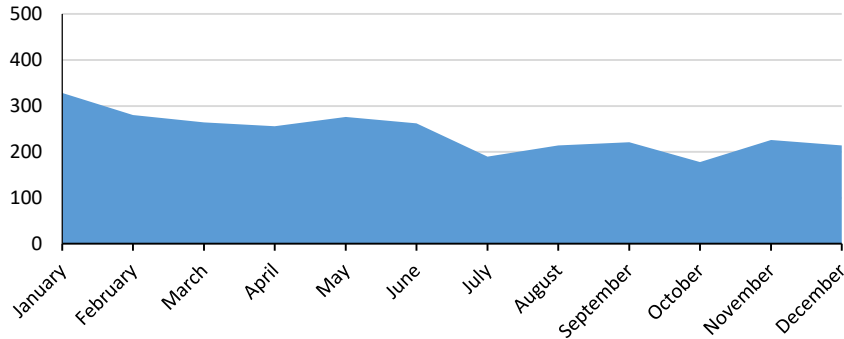


Construction Occupations in Hartford County

Construction Industry Job Postings

January - December 2017



Top Company Postings

- Advance Plumbing & Heating Supply Inc.
- Ceco Concrete Construction
- Oldcastle Inc.
- Centimark Corporation
- Eastern Communications Inc.
- RGS Energy
- Ross Mechanical Contractors LLC
- Aiello Home Services
- Interstate Electrical Services Corporation
- Lighthouse Enterprises Inc.

General Skills

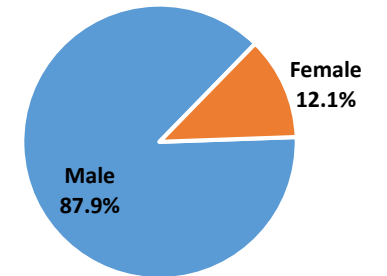
- Construction
- Management
- Operations
- Leadership
- Troubleshooting
- Communications
- Customer Service
- Microsoft Office
- Project Management
- Information Technology

Specialized Skills

- Plumbing
- Electrical Wirings
- Subcontracting
- Electrical Equipment
- Paneling
- Blueprinting
- Renovation
- Sheet Metal
- Circuit Switches
- Heavy Equipment

Sample Construction Occupation	2016 Jobs	Projected 2021 Jobs	Change	Annual Openings	Median Hourly Earnings	Typical Entry Level Education	Typical On-The-Job Training
Plumbers, Pipefitters, and Steamfitters	1,624	1,822	198	64	\$26.36	HS diploma or equivalent	Apprenticeship
Electricians	1,993	2,081	88	51	\$27.63	HS diploma or equivalent	Apprenticeship
Carpenters	2,620	2,582	(38)	39	\$18.59	HS diploma or equivalent	Apprenticeship
Highway Maintenance Workers	763	794	31	27	\$26.37	HS diploma or equivalent	Moderate (1-12 months)
Supervisors of Construction Trades and Extraction Workers	1,570	1,580	10	25	\$32.56	HS diploma or equivalent	None
Operating Engineers and Other Construction Equipment Operators	874	882	8	17	\$30.02	HS diploma or equivalent	Moderate (1-12 months)
Sheet Metal Workers	434	460	26	15	\$24.64	HS diploma or equivalent	Apprenticeship
Construction and Building Inspectors	298	316	18	13	\$33.34	HS diploma or equivalent	Moderate (1-12 months)
Helpers--Pipelayers, Plumbers, Pipefitters, and Steamfitters	129	152	23	7	\$13.53	HS diploma or equivalent	Short (1 month)
Brickmasons and Blockmasons	223	237	14	6	\$30.18	HS diploma or equivalent	Apprenticeship
Paving, Surfacing, and Tamping Equipment Operators	194	195	1	5	\$21.44	HS diploma or equivalent	Moderate (1-12 months)
Helpers--Electricians	168	180	12	5	\$14.71	HS diploma or equivalent	Short (1 month)
Hazardous Materials Removal Workers	212	210	(2)	5	\$19.71	HS diploma or equivalent	Moderate (1-12 months)
Insulation Workers, Mechanical	58	63	5	3	\$28.81	HS diploma or equivalent	Apprenticeship
Structural Iron and Steel Workers	143	141	(2)	2	\$23.25	HS diploma or equivalent	Apprenticeship

Construction Industry Workers by Gender



Construction Industry Workers by Age

