



Capital Workforce Partners (CWP) is one of five regional workforce development boards in the state. Its purpose is to close the gap between job seeker skills and business needs, and its mission is to leverage public and private resources to produce skilled workers for a competitive regional economy in 37 municipalities within North Central CT.

**Services Provided to West Hartford, Connecticut by Capital Workforce Partners
July 1, 2016 – June 30, 2017**

Adult Career Services

Services Overview 2016/2017 – 620 Individuals Served

Overview	Program(s)	Individuals Served
<ul style="list-style-type: none"> CWP oversees the operation of four in the regional American Job Centers in partnership with the State Dept. of Labor and other state agencies. These centers provide job seekers with a full array of career services. 	• Self-directed career services	408
	• Workforce Innovation and Opportunity Act (WIOA)	77
	• Jobs First (Welfare to Work)	105
	• Second Chance ex-offender re-entry program	4
	• REACH (H1B)	14
	• STEP UP	3
	• Jobs Funnel	8
	• Mortgage Crisis Job Training Program	1

Business Services

Services Overview 2016/2017 – 31 Businesses Served

Overview	Partnership Sector Focus	Businesses Receiving Service*
<ul style="list-style-type: none"> Business Services helps businesses find the talent they need by connecting businesses to a large pool of job-ready talent, and act as a conduit to workforce related resources. Employer-focused programs and services help businesses find the skilled people they need to help support and/or grow their business. 	<ul style="list-style-type: none"> CWP convenes partnerships comprised of business leaders in three key sectors: healthcare, manufacturing, and construction. These business-led groups ensure that CWP and the workforce system are preparing job seekers to meet current and future business needs. 	31

* Includes businesses that have received hiring subsidies and hired CWP's customers.

Youth Services

Capital Workforce Partners' Youth Programs provide resources to prepare youth and young adults ages 14 to 24 for careers and self-sufficiency through work experiences and training.

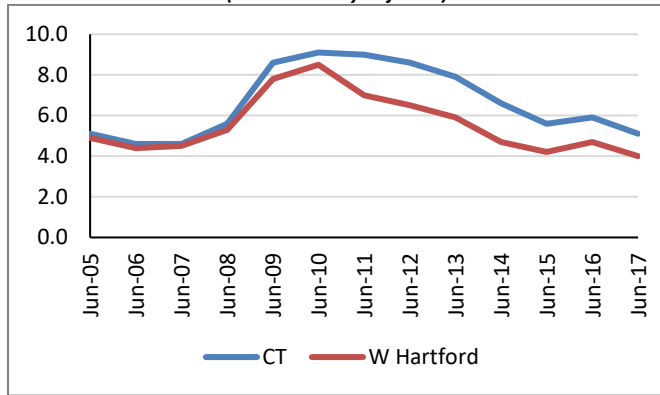
Services Overview 2016/2017 – 23 Youth Served

Program	Number Served
• Summer Youth/Year-Round Internship Program	13
• Opportunity Youth Programs	10

Demographic and Workforce Overview

Unemployment Rates And Median Household Income

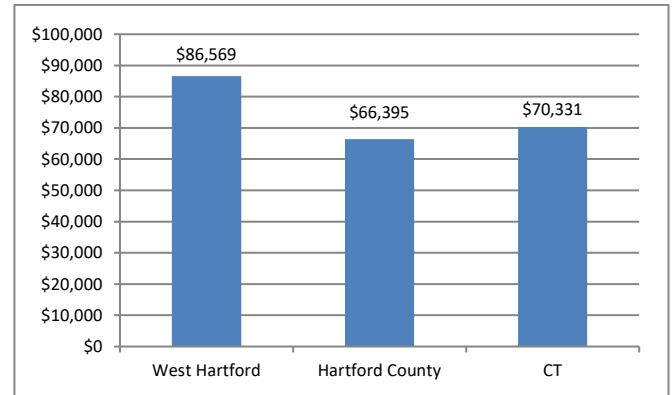
**Unemployment Rate
2005 – June 2017**
(not seasonally adjusted)



Source: CT Dept. of Labor

Over the past twelve years, from 2005 to 2017, the unemployment rate in West Hartford has been either in line with that of the state, or about one to two percentage points lower than that of the state.

**Median Household Income
2015**



Source: US Census Bureau American Community Survey

The median household income is \$86,569; this is \$20,174 more than that of Hartford County, and \$16,238 more than that of Connecticut.

Labor Market Profile – June, 2017

	West Hartford	% of Hartford County	Hartford County
Total Population	63,288	7.1%	896,943
Labor Force	35,027	7.2%	486,467
Employed	33,616	7.3%	460,606
Unemployed	1,411	5.5%	25,861
Unemployment Rate (1)	4.0%	NA	5.3%
Labor Force Participation Rate	67.3%	NA	67.1%

(1) not seasonally adjusted

Source: US Census Bureau; CT Dept. of Labor

Major Employers

University of Hartford	Wiremold/Legrand
Cheesecake Factory	Town of West Hartford
Hospital At Hebrew Health Care	Triumph Engine Control Systems

Source: CT Dept. of Labor; CT Data Collaborative



Capital Workforce Partners - One Union Place - Hartford, CT 06103
www.capitalworkforce.org