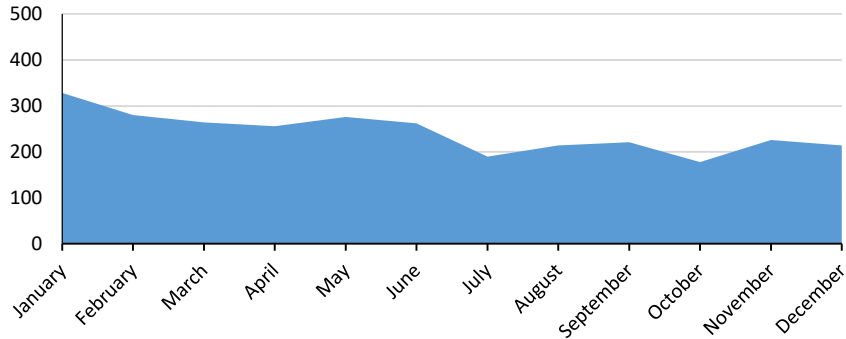


Construction Occupations in Hartford County

Construction Industry Job Postings

January - December 2017



Top Company Postings

Advance Plumbing & Heating Supply Inc.
 Ceco Concrete Construction
 Oldcastle Inc.
 Centimark Corporation
 Eastern Communications Inc.
 RGS Energy
 Ross Mechanical Contractors LLC
 Aiello Home Services
 Interstate Electrical Services Corporation
 Lighthouse Enterprises Inc.

General Skills

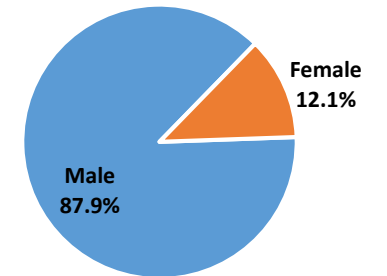
Construction
 Management
 Operations
 Leadership
 Troubleshooting
 Communications
 Customer Service
 Microsoft Office
 Project Management
 Information Technology

Specialized Skills

Plumbing
 Electrical Wirings
 Subcontracting
 Electrical Equipment
 Paneling
 Blueprinting
 Renovation
 Sheet Metal
 Circuit Switches
 Heavy Equipment

Sample Construction Occupation	2016 Jobs	Projected 2021 Jobs	Change	Annual Openings	Median Hourly Earnings	Typical Entry Level Education	Typical On-The-Job Training
Plumbers, Pipefitters, and Steamfitters	1,624	1,822	198	64	\$26.36	HS diploma or equivalent	Apprenticeship
Electricians	1,993	2,081	88	51	\$27.63	HS diploma or equivalent	Apprenticeship
Carpenters	2,620	2,582	(38)	39	\$18.59	HS diploma or equivalent	Apprenticeship
Highway Maintenance Workers	763	794	31	27	\$26.37	HS diploma or equivalent	Moderate (1-12 months)
Supervisors of Construction Trades and Extraction Workers	1,570	1,580	10	25	\$32.56	HS diploma or equivalent	None
Operating Engineers and Other Construction Equipment Operators	874	882	8	17	\$30.02	HS diploma or equivalent	Moderate (1-12 months)
Sheet Metal Workers	434	460	26	15	\$24.64	HS diploma or equivalent	Apprenticeship
Construction and Building Inspectors	298	316	18	13	\$33.34	HS diploma or equivalent	Moderate (1-12 months)
Helpers--Pipelayers, Plumbers, Pipefitters, and Steamfitters	129	152	23	7	\$13.53	HS diploma or equivalent	Short (1 month)
Brickmasons and Blockmasons	223	237	14	6	\$30.18	HS diploma or equivalent	Apprenticeship
Paving, Surfacing, and Tamping Equipment Operators	194	195	1	5	\$21.44	HS diploma or equivalent	Moderate (1-12 months)
Helpers--Electricians	168	180	12	5	\$14.71	HS diploma or equivalent	Short (1 month)
Hazardous Materials Removal Workers	212	210	(2)	5	\$19.71	HS diploma or equivalent	Moderate (1-12 months)
Insulation Workers, Mechanical	58	63	5	3	\$28.81	HS diploma or equivalent	Apprenticeship
Structural Iron and Steel Workers	143	141	(2)	2	\$23.25	HS diploma or equivalent	Apprenticeship

Construction Industry Workers by Gender



Construction Industry Workers by Age

