



Capital Workforce Partners (CWP) is one of five regional workforce development boards in the state. Its purpose is to close the gap between job seeker skills and business needs, and its mission is to leverage public and private resources to produce skilled workers for a competitive regional economy in 37 municipalities within North Central CT.

**Services Provided to Tolland, Connecticut by Capital Workforce Partners
July 1, 2016 – June 30, 2017**

Career Services

Services Overview 2016/2017 – 105 Individuals Served

Overview	Program(s)	Individuals Served
<ul style="list-style-type: none"> CWP oversees the operation of four in the regional American Job Centers in partnership with the State Dept. of Labor and other state agencies. These centers provide job seekers with a full array of career services. 	<ul style="list-style-type: none"> Self-directed career services Workforce Innovation and Opportunity Act (WIOA) Jobs First (Welfare to Work) REACH (H1B) 	84 14 4 3

Business Services

Services Overview 2016/2017 – 1 Business Served

Overview	Partnership Sector Focus	Businesses Receiving Service*
<ul style="list-style-type: none"> Business Services helps businesses find the talent they need by connecting businesses to a large pool of job-ready talent, and act as a conduit to workforce related resources. Employer-focused programs and services help businesses find the skilled people they need to help support and/or grow their business. 	<ul style="list-style-type: none"> CWP convenes partnerships comprised of business leaders in three key sectors: healthcare, manufacturing, and construction. These business-led groups ensure that CWP and the workforce system are preparing job seekers to meet current and future business needs. 	1

* Includes businesses that have received hiring subsidies and hired CWP's customers.

Youth Services

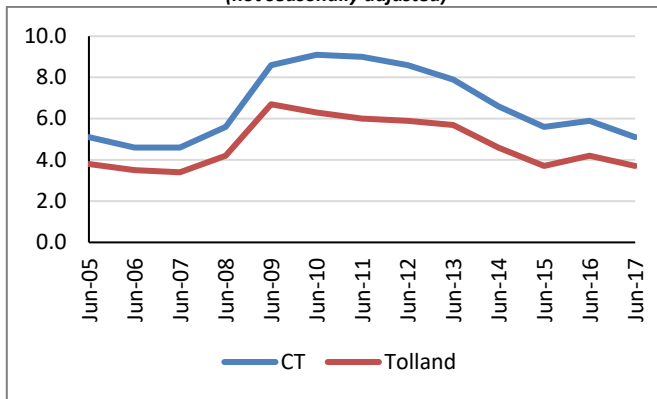
Capital Workforce Partners' Youth Programs provide resources to prepare youth and young adults ages 14 to 24 for careers and self-sufficiency through work experiences and training.

Services Overview 2016/2017 – 2 Youth Served

Program	Number Served
<ul style="list-style-type: none"> Summer Youth/Year-Round Internship Program 	1
<ul style="list-style-type: none"> Opportunity Youth Programs 	1

Unemployment Rates and Median Household Income

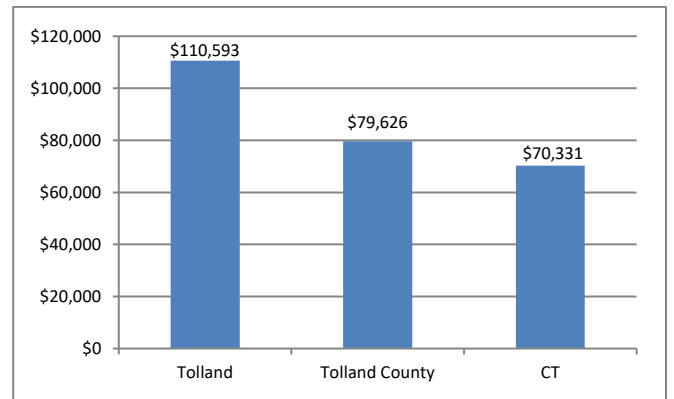
**Unemployment Rate
2005 – June 2017**
(not seasonally adjusted)



Source: CT Dept. of Labor

Over the past twelve years, from 2005 to 2017, the unemployment rate in Tolland has been about 1.5 to 2.5 percentage points lower than that of the state.

**Median Household Income
2015**



Source: US Census Bureau American Community Survey

The median household income is \$110,593; this is over \$30,000 more the county and over \$40,000 more than the state.

Labor Market Profile – June 2017

	Tolland	% of Tolland County	Tolland County
Total Population	14,935	9.8%	151,948
Labor Force	8,804	10.0%	87,777
Employed	8,476	10.1%	83,830
Unemployed	328	8.3%	3,947
Unemployment Rate (1)	3.7%	NA	4.5%
Labor Force Participation Rate	74.0%	NA	67.8%

(1) not seasonally adjusted

Source: US Census Bureau; CT Dept. of Labor

Major Employers

Gerber Scientific Products Inc.	Nerac Inc.
Standard Register Co.	Dari Farms Ice Cream Co.
Woodlake At Tolland Health Center	Tolland High School
CNC Software	Big Y

Source: CT Dept. of Labor; CT Data Collaborative



Capital Workforce Partners - One Union Place - Hartford, CT 06103
www.capitalworkforce.org