



**Capital Workforce Partners** is one of five regional workforce development boards in the state, established under the federal Workforce Investment Act (WIA) of 1998 and reauthorized in 2014 under the Workforce Innovation and Opportunity Act (WIOA). Its mission is to leverage public and private resources to produce skilled workers for a competitive regional economy in 37 municipalities within North Central CT. A consortium of the region’s chief elected officials appoints representatives to the board of directors from private sector business, education, labor, and public groups.

## **Services Provided to Southington, Connecticut by Capital Workforce Partners July 1, 2015 – June 30, 2016**

### **Adult Career Services**



Capital Workforce Partners oversees the operation of four American Job Centers in the region in partnership with the State Dept. of Labor and other state agencies.

These centers provide job seekers with a full array of services including:

- ❖ Job referrals
- ❖ Career workshops
- ❖ Job development
- ❖ Online training
- ❖ Individual training scholarships
- ❖ Individualized career guidance
- ❖ Recruitment events

Services Overview 2015/2016 – 178 Individuals Served	
American Job Center Services, including Workshops	124 customer visits for self-service, workshops or 1-1 support
Adult Individual Training Accounts	2 individuals received Individual Training Scholarships
Workforce Innovation and Opportunity Act (WIOA) Low Income Adult or Laid Off Workers	15 registered customers
Jobs First individuals engaged in job search and subsidized employment activities	39 participants

### **Specialty Services and Sector Focused Services**

#### **Mortgage Crisis Job Training Program**

Helps borrowers who are behind on their mortgage payments keep their homes, and helps them gain the skills they need to earn more money and become financially stable.

#### **Healthcare Careers – Health Careers and REACH Projects**

The Health Careers and REACH Projects provide funding to healthcare providers to support the hiring and training of healthcare workers, i.e., medical coders, IT professionals and nurses.

- ❖ 1 Southington job seeker who received On-the-Job Training in Nursing, Medical Coding and Health IT entered permanent employment.

#### **Construction / Manufacturing - Jobs Funnel**

The Jobs Funnel is a pre-employment preparation and job training service for area residents seeking employment in the construction fields, and serves as the model “Funnel” program for the state.

#### **STEP UP - Manufacturing and Subsidized Employment**

Provides wage incentives for hiring unemployed adults. There is also a STEP UP program for Veterans.

- ❖ 5 Southington companies benefitted from wage incentives for the first 6 months employment; employees were from area towns.

## ***Business Services***

Capital Workforce Partners' Business Services helps employers find the talent they need. Our Business Consultants:

- ❖ Are the conduit to workforce related resources
- ❖ Connect employers to a large pool of middle-skilled, job ready talent
- ❖ Serve as your workforce agent, expert and concierge

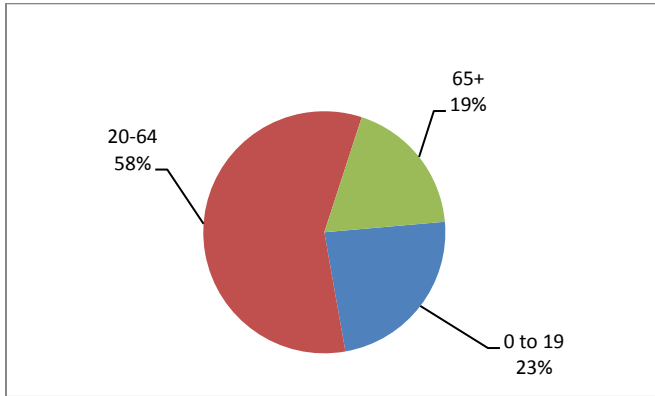
They provide recruitment assistance, job match services, custom and timely labor market information, training and wage incentives when available.

- ❖ 1 employer in Southington was engaged by Capital Workforce Partners' Business Services.
- ❖ 1 business was assisted with job placement.

# Demographic and Workforce Overview

## AGE DISTRIBUTION AND DEMOGRAPHICS

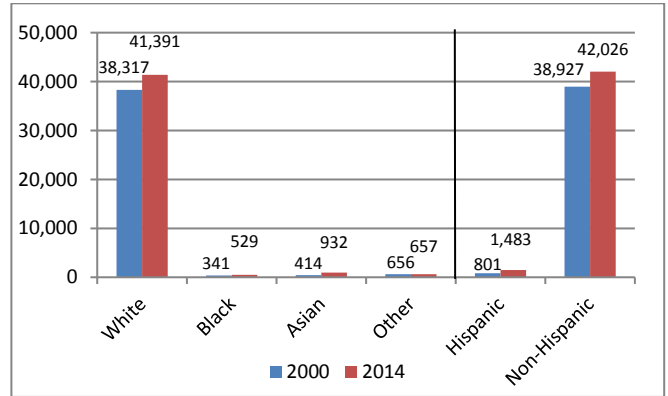
**Age Distribution  
2014**



Source: US Census Bureau American Community Survey

The age distribution of the working population (20-64) in Southington is two percentage points lower than Hartford County and the state. At 45, the median age is about five years older than the county and state.

**Racial/Ethnic Composition Change  
2000 to 2014**

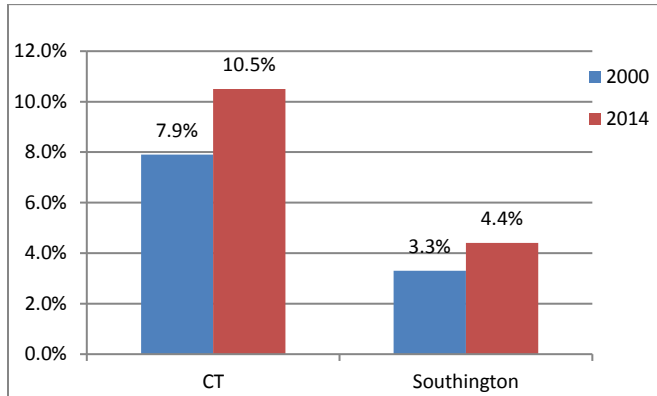


Source: US Census Bureau American Community Survey

The population is predominately White and Non-Hispanic. Since 2000, the total population has increased by 10 percent.

## POVERTY AND EDUCATIONAL ATTAINMENT

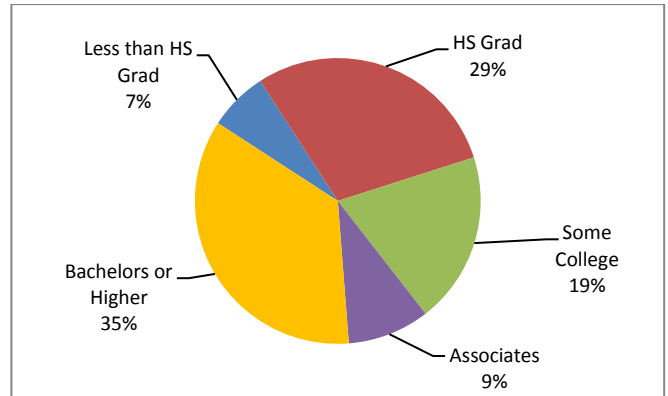
**Percent of Individuals with Income Below  
Poverty Level  
2000 to 2014**



Source: US Census Bureau American Community Survey

In 2014, at 4.4% for Individuals, the percentage in poverty is much lower than the state; however, poverty has increased in Southington and the state.

**Educational Attainment (aged 25+)  
2014**

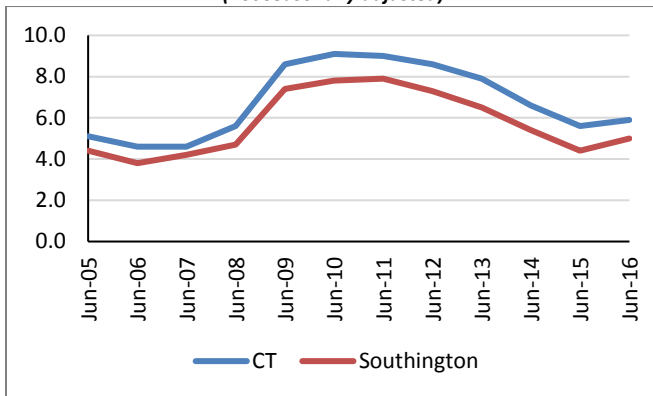


Source: US Census Bureau American Community Survey

The percentage of individuals with a Bachelors or Higher education is in line with the county and the state.

## UNEMPLOYMENT RATES AND MEDIAN HOUSEHOLD INCOME

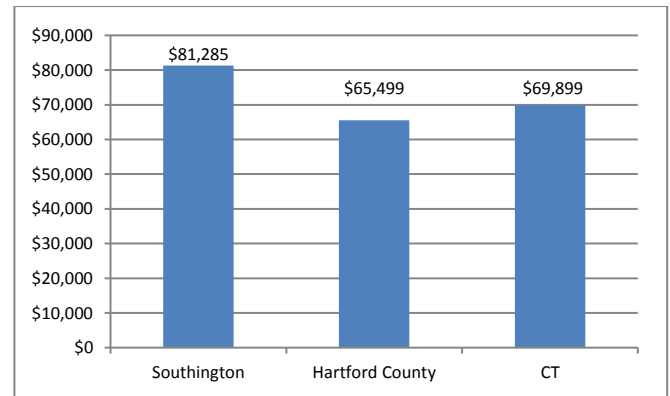
**Unemployment Rate**  
2005 – June 2016  
(not seasonally adjusted)



Source: CT Dept. of Labor

Over the past eleven years, from 2005 to 2016, the unemployment rate in Southington has been consistently about one percentage point lower than that of the state.

**Median Household Income**  
2014



Source: US Census Bureau American Community Survey

The median household income is \$81,285; this is over \$15,000 more than the county and over \$11,000 more than the state.

## LABOR MARKET PROFILE – June, 2016

	Southington	% of Hartford County	Hartford County
Total Population	43,509	4.8%	897,374
Labor Force	24,436	5.1%	477,895
Employed	23,221	5.2%	447,905
Unemployed	1,215	4.1%	29,990
Unemployment Rate (1)	5.0%	NA	6.3%

(1) not seasonally adjusted

Source: US Census Bureau; CT Dept. of Labor

## MAJOR EMPLOYERS

Superior Energy Resource LLC	Yarde Metals Inc.
Smiths Medical	Mt. Southington Ski Area
Hospital of Central CT-Bradley	Southington Care Center
Southington High School	Aqua Turf Club
Connecticut On-Line Computer Center	

Source: CT Dept. of Labor; CT Data Collaborative



Capital Workforce Partners - One Union Place - Hartford, CT 06103  
www.capitalworkforce.org