



**Capital Workforce Partners** (CWP) is one of five regional workforce development boards in the state. Its purpose is to close the gap between job seeker skills and business needs, and its mission is to leverage public and private resources to produce skilled workers for a competitive regional economy in 37 municipalities within North Central CT.

**Services Provided to Southington, Connecticut by Capital Workforce Partners  
July 1, 2016 – June 30, 2017**

### Adult Career Services

**Services Overview 2016/2017 – 321 Individuals Served**

Overview	Program(s)	Individuals Served
<ul style="list-style-type: none"> <li>CWP oversees the operation of four in the regional American Job Centers in partnership with the State Dept. of Labor and other state agencies.</li> <li>These centers provide job seekers with a full array of career services.</li> </ul>	• Self-directed career services	236
	• Workforce Innovation and Opportunity Act (WIOA)	21
	• Jobs First (Welfare to Work)	59
	• REACH (H1B)	2
	• STEP UP	3

### Business Services

**Services Overview 2016/2017 – 4 Businesses Served**

Overview	Partnership Sector Focus	Businesses Receiving Service*
<ul style="list-style-type: none"> <li>Business Services helps businesses find the talent they need by connecting businesses to a large pool of job-ready talent, and act as a conduit to workforce related resources.</li> <li>Employer-focused programs and services help businesses find the skilled people they need to help support and/or grow their business.</li> </ul>	<ul style="list-style-type: none"> <li>CWP convenes partnerships comprised of business leaders in three key sectors: healthcare, manufacturing, and construction.</li> <li>These business-led groups ensure that CWP and the workforce system are preparing job seekers to meet current and future business needs.</li> </ul>	4

\* Includes businesses that have received hiring subsidies and hired CWP's customers.

### Youth Services

Capital Workforce Partners' Youth Programs provide resources to prepare youth and young adults ages 14 to 24 for careers and self-sufficiency through work experiences and training.

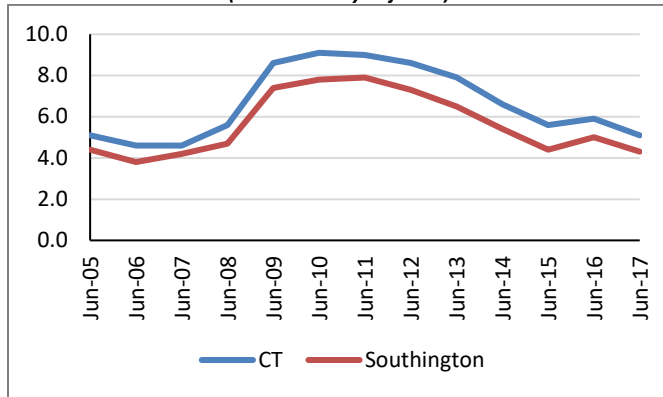
**Services Overview 2016/2017 – 1 Youth Served**

Program	Number Served
• Summer Youth/Year-Round Internship Program	1

## Demographic and Workforce Overview

### Unemployment Rates And Median Household Income

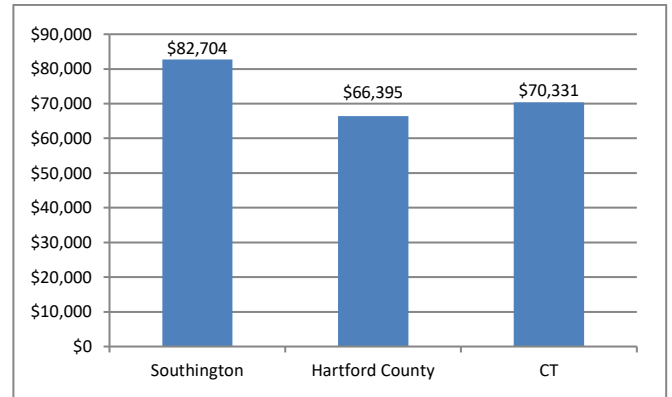
**Unemployment Rate  
2005 – June 2017**  
(not seasonally adjusted)



Source: CT Dept. of Labor

Over the past twelve years, from 2005 to 2017, the unemployment rate in Southington has been consistently about one percentage point lower than that of the state.

**Median Household Income  
2015**



Source: US Census Bureau American Community Survey

The median household income is \$82,704; this is over \$16,000 more than the county and over \$12,000 more than the state.

### Labor Market Profile – June, 2017

	Southington	% of Hartford County	Hartford County
Total Population	43,625	4.9%	896,943
Labor Force	24,953	5.1%	486,467
Employed	23,891	5.2%	460,606
Unemployed	1,062	4.1%	25,861
Unemployment Rate (1)	4.3%	NA	5.3%
Labor Force Participation Rate	69.5%	NA	67.1%

(1) not seasonally adjusted

Source: US Census Bureau; CT Dept. of Labor

### Major Employers

Superior Energy Resource LLC	Yarde Metals Inc.
Smiths Medical	Mt. Southington Ski Area
Hospital of Central CT-Bradley	Southington Care Center
Southington High School	Aqua Turf Club
Connecticut On-Line Computer Center	

Source: CT Dept. of Labor; CT Data Collaborative



Capital Workforce Partners - One Union Place - Hartford, CT 06103  
www.capitalworkforce.org