



**Capital Workforce Partners** is one of five regional workforce development boards in the state, established under the federal Workforce Investment Act (WIA) of 1998 and reauthorized in 2014 under the Workforce Innovation and Opportunity Act (WIOA). Its mission is to leverage public and private resources to produce skilled workers for a competitive regional economy in 37 municipalities within North Central CT. A consortium of the region’s chief elected officials appoints representatives to the board of directors from private sector business, education, labor, and public groups.

## ***Services Provided to Newington, Connecticut by Capital Workforce Partners July 1, 2015 – June 30, 2016***

### ***Adult Career Services***



Capital Workforce Partners oversees the operation of four American Job Centers in the region in partnership with the State Dept. of Labor and other state agencies.

These centers provide job seekers with a full array of services including:

- ❖ Job referrals
- ❖ Career workshops
- ❖ Job development
- ❖ Online training
- ❖ Individual training scholarships
- ❖ Individualized career guidance
- ❖ Recruitment events

<b>Services Overview 2015/2016 – 218 Individuals Served</b>	
American Job Center Services, including Workshops	169 customer visits for self-service, workshops or 1-1 support
Adult Individual Training Accounts	5 individuals received Individual Training Scholarships
Workforce Innovation and Opportunity Act (WIOA) Low Income Adult or Laid Off Workers	28 registered customers
Jobs First individuals engaged in job search and subsidized employment activities	21 participants

### ***Youth Services***

Capital Workforce Partners’ Youth Programs provide resources to prepare youth ages 14 to 24 for careers and self-sufficiency. Town wide services include:

#### **4 Work Experiences and Training for Youth 14 - 24**

<b>Youth</b>	<b>2015-16 Served</b>
Summer Youth	1
Opportunity Youth Programs	3

### ***Specialty Services and Sector Focused Services***

#### **Mortgage Crisis Job Training Program**

Helps borrowers who are behind on their mortgage payments keep their homes, and helps them gain the skills they need to earn more money and become financially stable.

- ❖ 5 individuals received training scholarships.

### **Healthcare Careers – Health Careers and REACH Projects**

The Health Careers and REACH Projects provide funding to healthcare providers to support the hiring and training of healthcare workers, i.e., medical coders, IT professionals and nurses.

- ❖ 2 Newington job seekers who received On-the-Job Training in Nursing, Medical Coding and Health IT resulted in permanent employment.

### **Construction / Manufacturing - Jobs Funnel**

The Jobs Funnel is a pre-employment preparation and job training service for area residents seeking employment in the construction fields, and serves as the model “Funnel” program for the state.

- ❖ 4 participants.
- ❖ 1 placed into employment.

### **STEP UP - Manufacturing and Subsidized Employment**

Provides wage incentives for hiring unemployed adults. There is also a STEP UP program for Veterans.

- ❖ 2 previously unemployed Newington job seekers were hired by area companies.
- ❖ 9 Newington companies benefitted from wage incentives for the first 6 months employment; employees were from area towns.

### **Business Services**

Capital Workforce Partners’ Business Services helps employers find the talent they need. Our Business Consultants:

- ❖ Are the conduit to workforce related resources
- ❖ Connect employers to a large pool of middle-skilled, job ready talent
- ❖ Serve as your workforce agent, expert and concierge

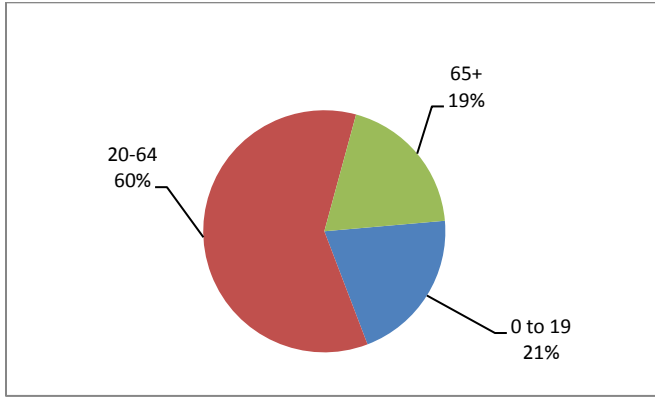
They provide recruitment assistance, job match services, custom and timely labor market information, training and wage incentives when available.

- ❖ 9 employers in Newington were engaged by Capital Workforce Partners’ Business Services.
- ❖ 2 businesses were assisted with job placement.

# Demographic and Workforce Overview

## AGE DISTRIBUTION AND DEMOGRAPHICS

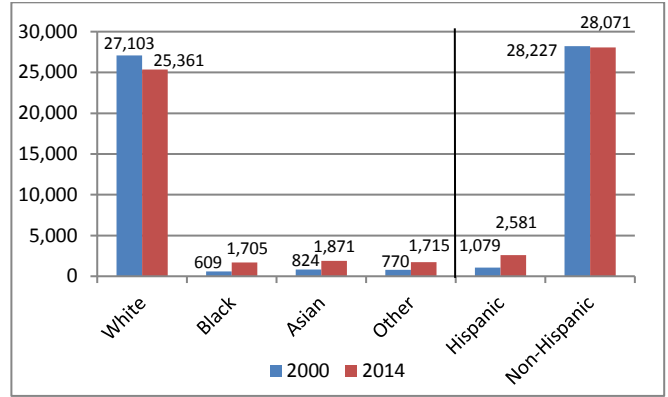
**Age Distribution  
2014**



Source: US Census Bureau American Community Survey

The age distribution of the working population (20-64) in Newington is in line with Hartford County and the state. At 44, the median age is four years older than the county and state.

**Racial/Ethnic Composition Change  
2000 to 2014**

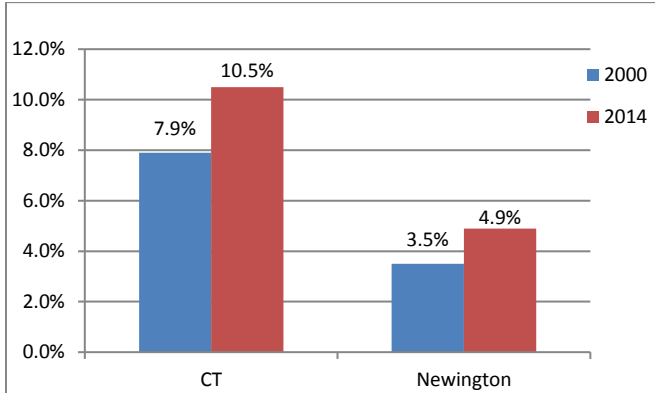


Source: US Census Bureau American Community Survey

Since 2000, the White population decreased slightly, while the Black, Asian, and Hispanic populations more than doubled.

## POVERTY AND EDUCATIONAL ATTAINMENT

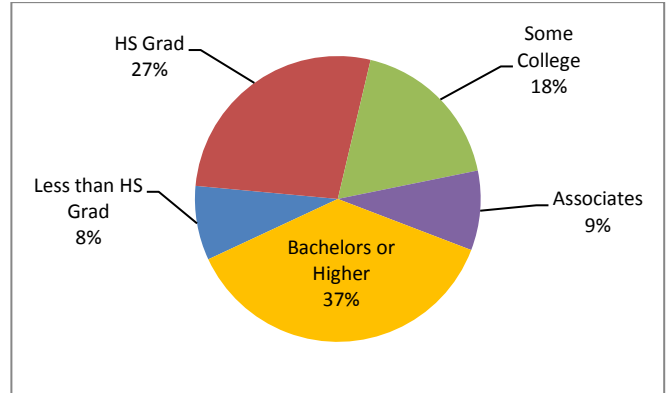
**Percent of Individuals with Income Below  
Poverty Level  
2000 to 2014**



Source: US Census Bureau American Community Survey

In 2014, poverty in Newington was about five percentage points less than the state for Individuals. While poverty has risen markedly for the state, it has been less of an increase in Newington.

**Educational Attainment (aged 25+)  
2014**

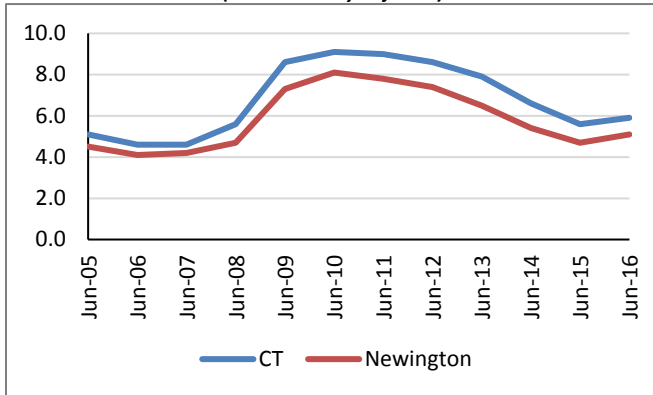


Source: US Census Bureau American Community Survey

The percentage of individuals with Bachelors or Higher education is in line with the county and the state.

## UNEMPLOYMENT RATES AND MEDIAN HOUSEHOLD INCOME

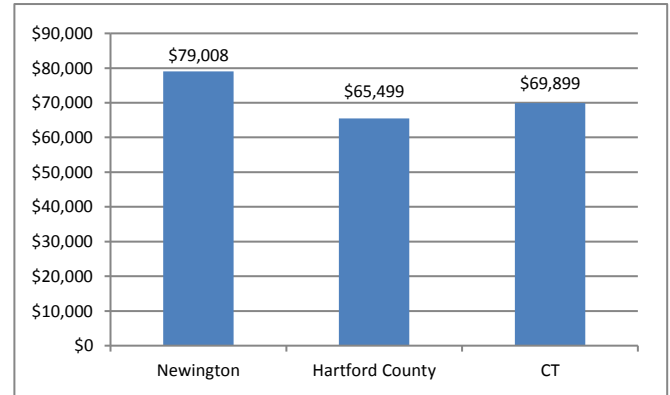
**Unemployment Rate  
2005 – June 2016**  
(not seasonally adjusted)



Source: CT Dept. of Labor

Over the past eleven years, from 2005 to 2016, the unemployment rate in Newington has been consistently about 1.0 to 1.5 percentage points lower than that of the state.

**Median Household Income  
2014**



Source: US Census Bureau American Community Survey

The median household income is \$79,008; this is over \$13,000 more than the county and over \$9,000 more than the state.

## LABOR MARKET PROFILE – June, 2016

	Newington	% of Hartford County	Hartford County
Total Population	30,652	3.4%	897,374
Labor Force	17,355	3.6%	477,895
Employed	16,466	3.7%	447,905
Unemployed	889	3.0%	29,990
Unemployment Rate (1)	5.1%	NA	6.3%

(1) not seasonally adjusted

Source: US Census Bureau; CT Dept. of Labor

## MAJOR EMPLOYERS

Connecticut Dept. of Transportation	Vets Admin Medical Center
Data-Mail Inc.	USA Security Svc Corp.
Connecticut Construction Ltd.	Compu-Data
Data Graphics Inc.	Stew Leonard's
Plumb Pak Inc.	PXC Aerostructures
Duracraft Plastics Inc.	

Source: CT Dept. of Labor; CT Data Collaborative



Capital Workforce Partners - One Union Place - Hartford, CT 06103  
www.capitalworkforce.org