



**Capital Workforce Partners** (CWP) is one of five regional workforce development boards in the state. Its purpose is to close the gap between job seeker skills and business needs, and its mission is to leverage public and private resources to produce skilled workers for a competitive regional economy in 37 municipalities within North Central CT.

**Services Provided to Vernon, Connecticut by Capital Workforce Partners  
July 1, 2016 – June 30, 2017**

**Adult Career Services**

**Services Overview 2016/2017 – 483 Individuals Served**

Overview	Program(s)	Individuals Served
<ul style="list-style-type: none"> <li>CWP oversees the operation of four in the regional American Job Centers in partnership with the State Dept. of Labor and other state agencies.</li> <li>These centers provide job seekers with a full array of career services.</li> </ul>	• Self-directed career services	321
	• Workforce Innovation and Opportunity Act (WIOA)	63
	• Jobs First (Welfare to Work)	91
	• REACH (H1B)	2
	• STEP UP	1
	• Jobs Funnel	3
	• Mortgage Crisis Job Training Program	2

**Youth Services**

Capital Workforce Partners' Youth Programs provide resources to prepare youth and young adults ages 14 to 24 for careers and self-sufficiency through work experiences and training.

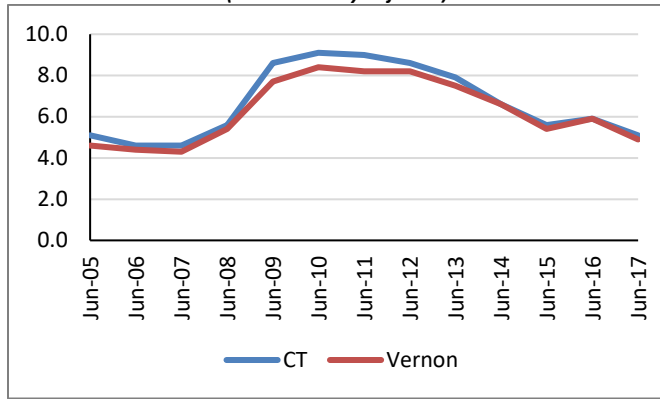
**Services Overview 2016/2017 – 17 Youth Served**

Program	Number Served
• Summer Youth/Year-Round Internship Program	16
• Opportunity Youth Programs	1

## Demographic and Workforce Overview

### Unemployment Rates and Median Household Income

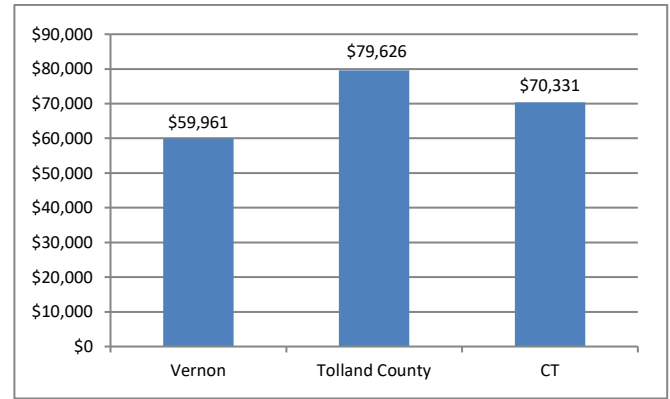
**Unemployment Rate  
2005 – June 2017**  
(not seasonally adjusted)



Source: CT Dept. of Labor

Over the past twelve years, from 2005 to 2017, the unemployment rate in Vernon has been fairly consistent with that of Connecticut.

**Median Household Income  
2015**



Source: US Census Bureau American Community Survey

The median household income is \$59,961; this is nearly \$20,000 less than the county and over \$10,000 less than that of the Connecticut.

### Labor Market Profile – June 2017

	Vernon	% of Tolland County	Tolland County
Total Population	29,114	19.2%	151,948
Labor Force	17,454	19.9%	87,777
Employed	16,602	19.8%	83,830
Unemployed	852	21.6%	3,947
Unemployment Rate (1)	4.9%	NA	4.5%
Labor Force Participation Rate	69.9%	NA	67.8%

(1) not seasonally adjusted

Source: US Census Bureau; CT Dept. of Labor

### Major Employers

Rockville General Hospital	ECHN Visiting Nurse & Health Services of CT
Hospice & Palliative Care	Super Stop & Shop
Vernon Manor Health Care Center	Price Chopper

Source: CT Dept. of Labor; CT Data Collaborative



Capital Workforce Partners - One Union Place - Hartford, CT 06103  
www.capitalworkforce.org