



Capital Workforce Partners is one of five regional workforce development boards in the state, established under the federal Workforce Investment Act (WIA) of 1998 and reauthorized in 2014 under the Workforce Innovation and Opportunity Act (WIOA). Its mission is to leverage public and private resources to produce skilled workers for a competitive regional economy in 37 municipalities within North Central CT. A consortium of the region’s chief elected officials appoints representatives to the board of directors from private sector business, education, labor, and public groups.

Services Provided to Farmington, Connecticut by Capital Workforce Partners July 1, 2015 – June 30, 2016

Adult Career Services



Capital Workforce Partners oversees the operation of four American Job Centers in the region in partnership with the State Dept. of Labor and other state agencies.

These centers provide job seekers with a full array of services including:

- ❖ Job referrals
- ❖ Career workshops
- ❖ Job development
- ❖ Online training
- ❖ Individual training scholarships
- ❖ Individualized career guidance
- ❖ Recruitment events

| Services Overview 2015/2016 – 106 Individuals Served | |
|--|---|
| American Job Center Services, including Workshops | 79 customer visits for self-service, workshops or 1-1 support |
| Adult Individual Training Accounts | 2 individuals received Individual Training Scholarships |
| Workforce Innovation and Opportunity Act (WIOA) Low Income Adult or Laid Off Workers | 12 registered customers |
| Jobs First individuals engaged in job search and subsidized employment activities | 15 participants |

Specialty Services and Sector Focused Services

Mortgage Crisis Job Training Program

Helps borrowers who are behind on their mortgage payments keep their homes, and helps them gain the skills they need to earn more money and become financially stable.

Healthcare Careers – Health Careers and REACH Projects

The Health Careers and REACH Projects provide funding to healthcare providers to support the hiring and training of healthcare workers, i.e., medical coders, IT professionals and nurses.

- ❖ 4 Farmington job seekers who received On-the-Job Training in Nursing, Medical Coding and Health IT entered permanent employment.
- ❖ 1 Farmington healthcare employer benefitted from Healthcare Careers projects and employed area healthcare residents.

Construction / Manufacturing - Jobs Funnel

The Jobs Funnel is a pre-employment preparation and job training service for area residents seeking employment in the construction fields, and serves as the model “Funnel” program for the state.

STEP UP - Manufacturing and Subsidized Employment

Provides wage incentives for hiring unemployed adults. There is also a STEP UP program for Veterans.

- ❖ 2 Farmington companies benefitted from wage incentives for the first 6 months employment; employees were from area towns.

Business Services

Capital Workforce Partners' Business Services helps employers find the talent they need. Our Business Consultants:

- ❖ Are the conduit to workforce related resources
- ❖ Connect employers to a large pool of middle-skilled, job ready talent
- ❖ Serve as your workforce agent, expert and concierge

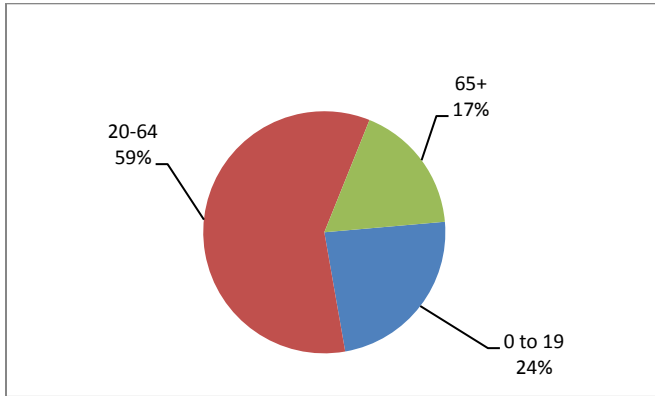
They provide recruitment assistance, job match services, custom and timely labor market information, training and wage incentives when available.

- ❖ 13 employers in Farmington were engaged by Capital Workforce Partners' Business Services.
- ❖ 5 businesses were assisted with job placement.

Demographic and Workforce Overview

AGE DISTRIBUTION AND DEMOGRAPHICS

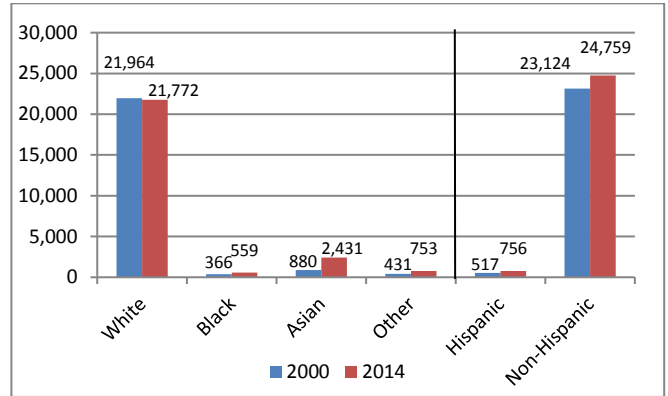
**Age Distribution
2014**



Source: US Census Bureau American Community Survey

The age distribution of the working population (20-64) is in line with Hartford County and the state. At 43, the median age is about three years older than the county and state.

**Racial/Ethnic Composition Change
2000 to 2014**

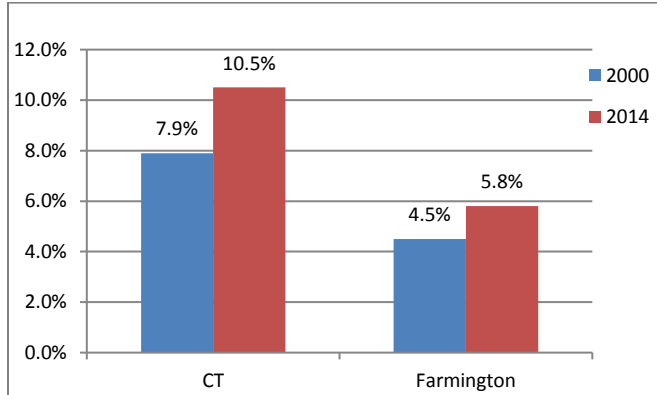


Source: US Census Bureau American Community Survey

The population is predominately White and Non-Hispanic. However, since 2000, the Asian population is on the rise comprising about 10 percent of the population.

POVERTY AND EDUCATIONAL ATTAINMENT

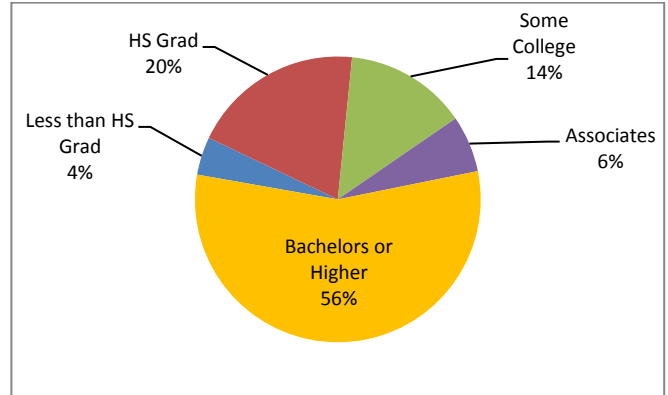
**Percent of Individuals with Income Below
Poverty Level
2000 to 2014**



Source: US Census Bureau American Community Survey

In 2014, at 5.8% for Individuals, the percentage in poverty is much lower than the state; however, poverty has increased in Farmington and in Connecticut since 2000.

**Educational Attainment (aged 25+)
2014**

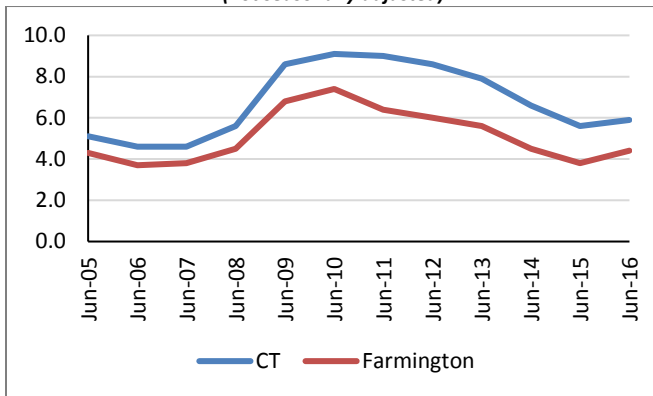


Source: US Census Bureau American Community Survey

Fifty-six percent have a Bachelors or Higher; this is 19 percentage points higher than the state and 20 percentage points higher than the county.

UNEMPLOYMENT RATES AND MEDIAN HOUSEHOLD INCOME

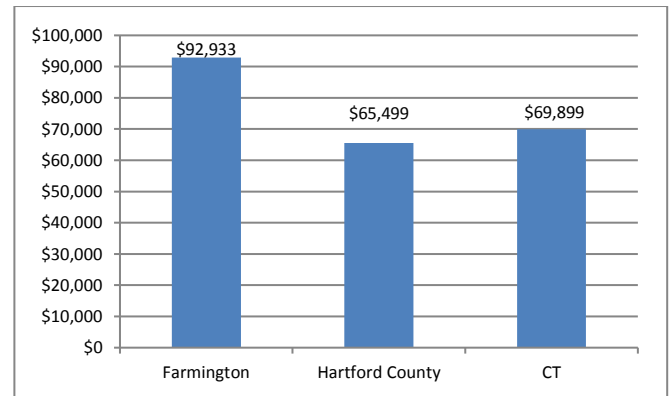
Unemployment Rate
2005 – June 2016
(not seasonally adjusted)



Source: CT Dept. of Labor

Over the past eleven years, from 2005 to 2016, the unemployment rate in Farmington has been consistently about 1.0 to 2.5 percentage points lower than the state.

Median Household Income
2014



Source: US Census Bureau American Community Survey

The median household income is \$92,933; this is over \$27,000 more than the county and over \$23,000 more than the state.

LABOR MARKET PROFILE – June, 2016

| | Farmington | % of Hartford County | Hartford County |
|-----------------------|------------|----------------------|-----------------|
| Total Population | 25,515 | 2.8% | 897,374 |
| Labor Force | 14,145 | 3.0% | 477,895 |
| Employed | 13,520 | 3.0% | 447,905 |
| Unemployed | 625 | 2.1% | 29,990 |
| Unemployment Rate (1) | 4.4% | NA | 6.3% |

(1) not seasonally adjusted

Source: US Census Bureau; CT Dept. of Labor

MAJOR EMPLOYERS

| | |
|-----------------------------|-------------------------------|
| UConn Health Center | Otis Elevator Co. |
| ConnectiCare Inc. | Trumpf Inc. |
| Tunxis Community College | Macy's |
| Stanley Access Technologies | Connecticut Spring & Stamping |

Source: CT Dept. of Labor; CT Data Collaborative



Capital Workforce Partners - One Union Place - Hartford, CT 06103
www.capitalworkforce.org