



Capital Workforce Partners is one of five regional workforce development boards in the state, established under the federal Workforce Investment Act (WIA) of 1998 and reauthorized in 2014 under the Workforce Innovation and Opportunity Act (WIOA). Its mission is to leverage public and private resources to produce skilled workers for a competitive regional economy in 37 municipalities within North Central CT. A consortium of the region’s chief elected officials appoints representatives to the board of directors from private sector business, education, labor, and public groups.

Services Provided to Granby, Connecticut by Capital Workforce Partners July 1, 2015 – June 30, 2016

Adult Career Services



Capital Workforce Partners oversees the operation of four American Job Centers in the region in partnership with the State Dept. of Labor and other state agencies.

These centers provide job seekers with a full array of services including:

- ❖ Job referrals
- ❖ Career workshops
- ❖ Job development
- ❖ Online training
- ❖ Individual training scholarships
- ❖ Individualized career guidance
- ❖ Recruitment events

Services Overview 2015/2016 – 38 Individuals Served	
American Job Center Services, including Workshops	31 customer visits for self-service, workshops or 1-1 support
Adult Individual Training Accounts	1 individual received an Individual Training Scholarship
Workforce Innovation and Opportunity Act (WIOA) Low Income Adult or Laid Off Workers	5 registered customers
Jobs First individuals engaged in job search and subsidized employment activities	2 participants

Specialty Services and Sector Focused Services

Mortgage Crisis Job Training Program

Helps borrowers who are behind on their mortgage payments keep their homes, and helps them gain the skills they need to earn more money and become financially stable.

Healthcare Careers – Health Careers and REACH Projects

The Health Careers and REACH Projects provide funding to healthcare providers to support the hiring and training of healthcare workers, i.e., medical coders, IT professionals and nurses.

Construction / Manufacturing - Jobs Funnel

The Jobs Funnel is a pre-employment preparation and job training service for area residents seeking employment in the construction fields, and serves as the model “Funnel” program for the state.

STEP UP - Manufacturing and Subsidized Employment

Provides wage incentives for hiring unemployed adults. There is also a STEP UP program for Veterans.

- ❖ 1 previously unemployed Granby job seeker was hired by an area company.

Business Services

Capital Workforce Partners' Business Services helps employers find the talent they need. Our Business Consultants:

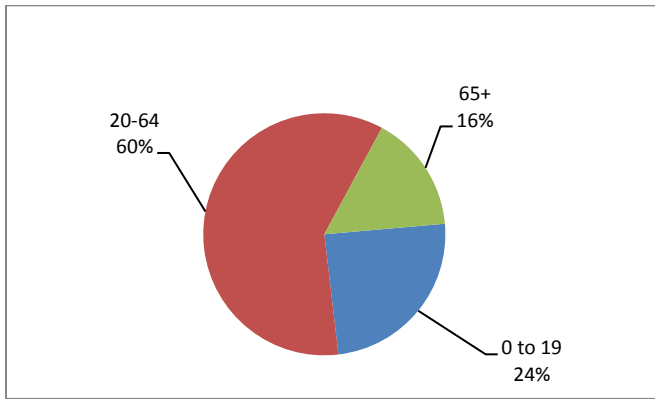
- ❖ Are the conduit to workforce related resources
- ❖ Connect employers to a large pool of middle-skilled, job ready talent
- ❖ Serve as your workforce agent, expert and concierge

They provide recruitment assistance, job match services, custom and timely labor market information, training and wage incentives when available.

Demographic and Workforce Overview

AGE DISTRIBUTION AND DEMOGRAPHICS

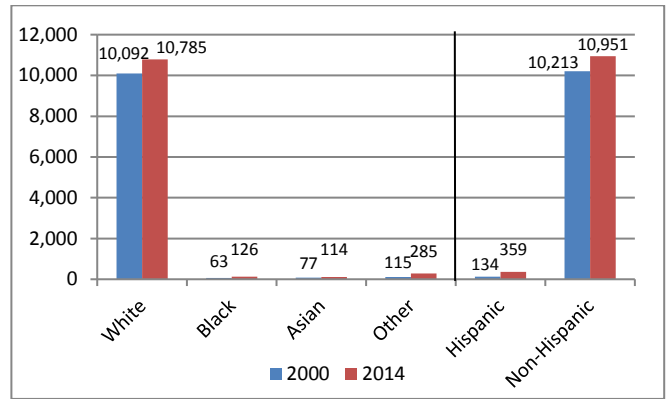
**Age Distribution
2014**



Source: US Census Bureau American Community Survey

The age distribution of the working population (20-64) in Granby is almost exactly in line with the county and state. The median age at 46 years old is six years older than Connecticut.

**Racial/Ethnic Composition Change
2000 to 2014**

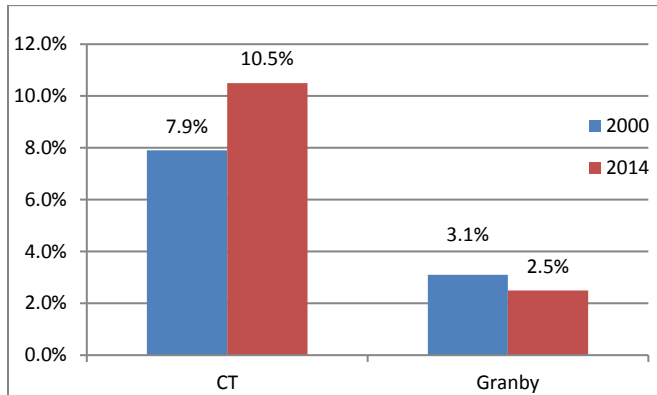


Source: US Census Bureau American Community Survey

The majority of the population is either White or Non-Hispanic: 95% identify as White and 97% Non-Hispanic.

POVERTY AND EDUCATIONAL ATTAINMENT

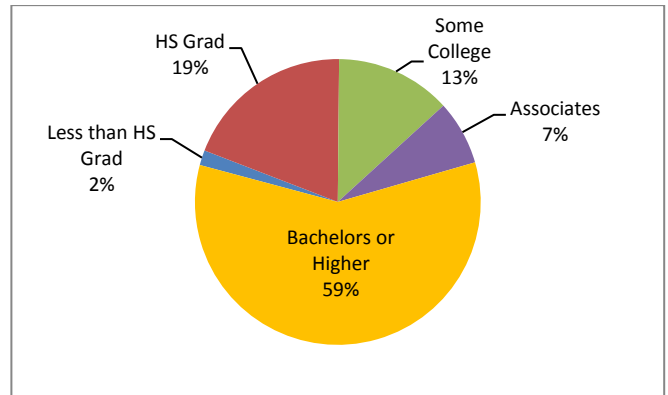
**Percent of Individuals with Income Below
Poverty Level
2000 to 2014**



Source: US Census Bureau American Community Survey

At 2.5% for Individuals, the percent in poverty is quite low in Granby. Granby's poverty of Individuals has decreased from 2000, whereas it has increased for many towns in the county and in Connecticut.

**Educational Attainment (aged 25+)
2014**

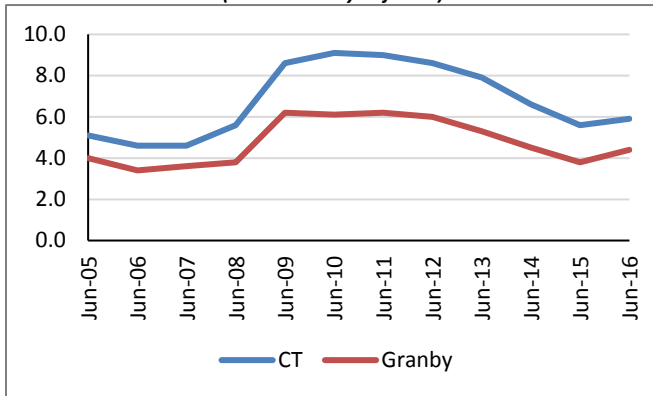


Source: US Census Bureau American Community Survey

Fifty-nine percent have a Bachelors or Higher; this is 22 percentage points more than the state. At two percent, those with less than a high school diploma are eight percentage points lower than the state.

UNEMPLOYMENT RATES AND MEDIAN HOUSEHOLD INCOME

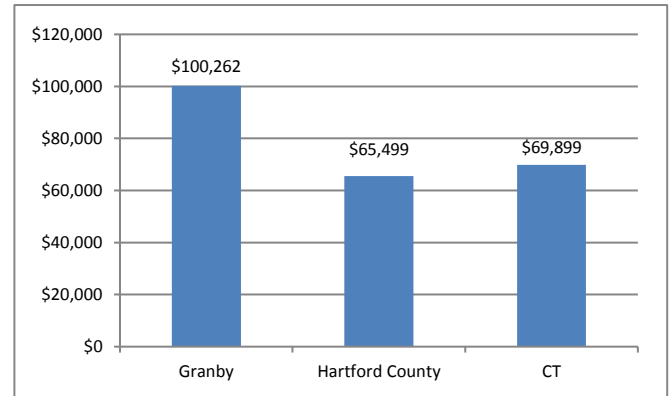
**Unemployment Rate
2005 – June 2016**
(not seasonally adjusted)



Source: CT Dept. of Labor

Over the past eleven years, from 2005 to 2016, the unemployment rate in Granby has been consistently 1.0 to 2.5 percentage points lower than that of the state.

**Median Household Income
2014**



Source: US Census Bureau American Community Survey

The median household income is \$100,262; this is \$34,763 more than Hartford County, and \$30,363 more than Connecticut.

LABOR MARKET PROFILE – June, 2016

	Granby	% of Hartford County	Hartford County
Total Population	11,310	1.3%	897,374
Labor Force	6,779	1.4%	477,895
Employed	6,480	1.4%	447,905
Unemployed	299	1.0%	29,990
Unemployment Rate (1)	4.4%	NA	6.3%

(1) not seasonally adjusted

Source: US Census Bureau; CT Dept. of Labor

MAJOR EMPLOYERS

Meadow Brook of Granby	Geisslers Supermarket
Super Stop & Shop	Granby Memorial High School
Salmon Brook Veterinary Hospital	

Source: CT Dept. of Labor; CT Data Collaborative



Capital Workforce Partners - One Union Place - Hartford, CT 06103
www.capitalworkforce.org