



Capital Workforce Partners (CWP) is one of five regional workforce development boards in the state. Its purpose is to close the gap between job seeker skills and business needs, and its mission is to leverage public and private resources to produce skilled workers for a competitive regional economy in 37 municipalities within North Central CT.

**Services Provided to Bloomfield, Connecticut by Capital Workforce Partners
July 1, 2016 – June 30, 2017**

Adult Career Services

Services Overview 2016/2017 – 526 Individuals Served

| Overview | Program(s) | Individuals Served |
|---|---|--------------------|
| <ul style="list-style-type: none"> CWP oversees the operation of four in the regional American Job Centers in partnership with the State Dept. of Labor and other state agencies. These centers provide job seekers with a full array of career services. | • Self-directed career services | 348 |
| | • Workforce Innovation and Opportunity Act (WIOA) | 62 |
| | • Jobs First (Welfare to Work) | 62 |
| | • Second Chance ex-offender re-entry program | 28 |
| | • REACH (H1B) | 6 |
| | • STEP UP | 5 |
| | • Jobs Funnel | 10 |
| | • Mortgage Crisis Job Training Program | 5 |

Business Services

Services Overview 2016/2017 – 18 Businesses Served

| Overview | Partnership Sector Focus | Businesses Receiving Service* |
|---|---|-------------------------------|
| <ul style="list-style-type: none"> Business Services helps businesses find the talent they need by connecting businesses to a large pool of job-ready talent, and act as a conduit to workforce related resources. Employer-focused programs and services help businesses find the skilled people they need to help support and/or grow their business. | <ul style="list-style-type: none"> CWP convenes partnerships comprised of business leaders in three key sectors: healthcare, manufacturing, and construction. These business-led groups ensure that CWP and the workforce system are preparing job seekers to meet current and future business needs. | 18 |

* Includes businesses that have received hiring subsidies and hired CWP's customers.

Youth Services

Capital Workforce Partners' Youth Programs provide resources to prepare youth and young adults ages 14 to 24 for careers and self-sufficiency through work experiences and training.

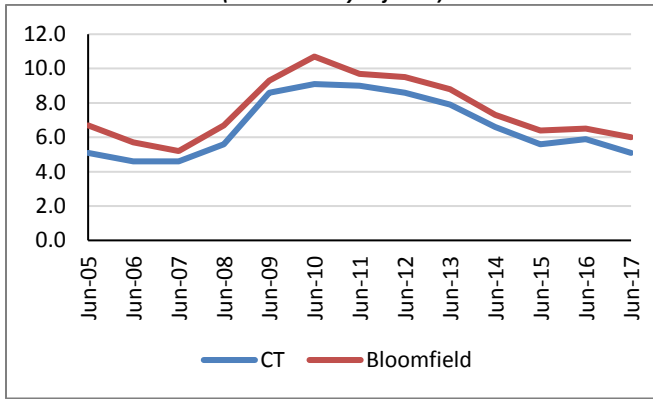
Services Overview 2016/2017 – 36 Youth Served

| Program | Number Served |
|--|---------------|
| • Summer Youth/Year-Round Internship Program | 25 |
| • Opportunity Youth Programs | 11 |

Demographic and Workforce Overview

Unemployment Rates And Median Household Income

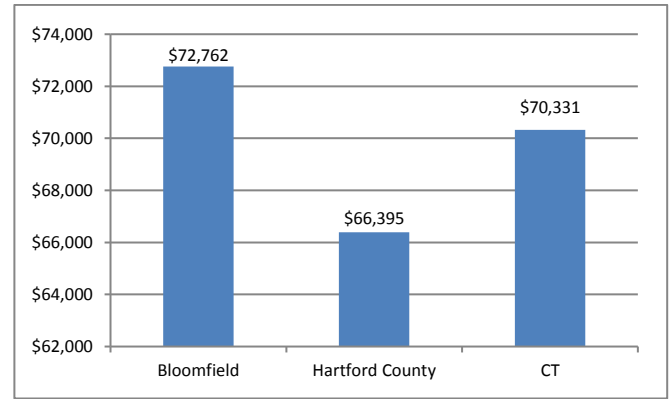
**Unemployment Rate
2005 – June 2017**
(not seasonally adjusted)



Source: CT Dept. of Labor

Over the past twelve years, from 2005 to 2017, the unemployment rate in Bloomfield has been consistently almost one percentage point higher than that of Connecticut.

**Median Household Income
2015**



Source: US Census Bureau American Community Survey

The median household income is \$72,762; this is over \$6,000 more than Hartford County and over \$2,000 more than the state.

Labor Market Profile – June, 2017

| | Bloomfield | % of Hartford County | Hartford County |
|--------------------------------|------------|----------------------|-----------------|
| Total Population | 20,679 | 2.3% | 896,943 |
| Labor Force | 11,768 | 2.4% | 486,467 |
| Employed | 11,064 | 2.4% | 460,606 |
| Unemployed | 704 | 2.7% | 25,861 |
| Unemployment Rate (1) | 6.0% | NA | 5.3% |
| Labor Force Participation Rate | 64.0% | NA | 67.1% |

(1) not seasonally adjusted

Source: US Census Bureau; CT Dept. of Labor

Major Employers

| | |
|--------------------------------|--------------------------------|
| Cigna Corp. | Kaman Aerospace Corp. |
| Express Direct Services | Jacobs Vehicle Systems Inc. |
| Seabury Inc. | Otis Elevator Co. |
| Bloomfield Information Systems | JDS Uniphase Corp. |
| Cianbro Corp. | Home Goods Distribution Center |

Source: CT Dept. of Labor; CT Data Collaborative



Capital Workforce Partners - One Union Place - Hartford, CT 06103
www.capitalworkforce.org