



Capital Workforce Partners is one of five regional workforce development boards in the state, established under the federal Workforce Investment Act (WIA) of 1998 and reauthorized in 2014 under the Workforce Innovation and Opportunity Act (WIOA). Its mission is to leverage public and private resources to produce skilled workers for a competitive regional economy in 37 municipalities within North Central CT. A consortium of the region’s chief elected officials appoints representatives to the board of directors from private sector business, education, labor, and public groups.

Services Provided to Bloomfield, Connecticut by Capital Workforce Partners July 1, 2015 – June 30, 2016

Adult Career Services



Capital Workforce Partners oversees the operation of four American Job Centers in the region in partnership with the State Dept. of Labor and other state agencies.

These centers provide job seekers with a full array of services including:

- ❖ Job referrals
- ❖ Career workshops
- ❖ Job development
- ❖ Online training
- ❖ Individual training scholarships
- ❖ Individualized career guidance
- ❖ Recruitment events

Services Overview 2015/2016 – 391 Individuals Served	
American Job Center Services, including Workshops	330 customer visits for self-service, workshops or 1-1 support
Adult Individual Training Accounts	5 individuals received Individual Training Scholarships
Workforce Innovation and Opportunity Act (WIOA) Low Income Adult or Laid Off Workers	42 registered customers
Jobs First individuals engaged in job search and subsidized employment activities	19 participants

Youth Services

Capital Workforce Partners’ Youth Programs provide resources to prepare youth ages 14 to 24 for careers and self-sufficiency. Town wide services include:

53 Work Experiences and Training for Youth 14 - 24

Youth	2015-16 Served
Summer Youth	41
Opportunity Youth Programs	10
Hartford Student Internship Plan	2

Specialty Services and Sector Focused Services

Mortgage Crisis Job Training Program

Helps borrowers who are behind on their mortgage payments keep their homes, and helps them gain the skills they need to earn more money and become financially stable.

- ❖ 6 individuals received training scholarships.

Healthcare Careers – Health Careers and REACH Projects

The Health Careers and REACH Projects provide funding to healthcare providers to support the hiring and training of healthcare workers, i.e., medical coders, IT professionals and nurses.

Construction / Manufacturing - Jobs Funnel

The Jobs Funnel is a pre-employment preparation and job training service for area residents seeking employment in the construction fields, and serves as the model “Funnel” program for the state.

- ❖ 9 participants.
- ❖ 2 placed into employment.

STEP UP - Manufacturing and Subsidized Employment

Provides wage incentives for hiring unemployed adults. There is also a STEP UP program for Veterans.

- ❖ 5 previously unemployed Bloomfield job seekers were hired by area companies.
- ❖ 4 Bloomfield companies benefitted from wage incentives for the first 6 months employment; employees were from area towns.

Business Services

Capital Workforce Partners’ Business Services helps employers find the talent they need. Our Business Consultants:

- ❖ Are the conduit to workforce related resources
- ❖ Connect employers to a large pool of middle-skilled, job ready talent
- ❖ Serve as your workforce agent, expert and concierge

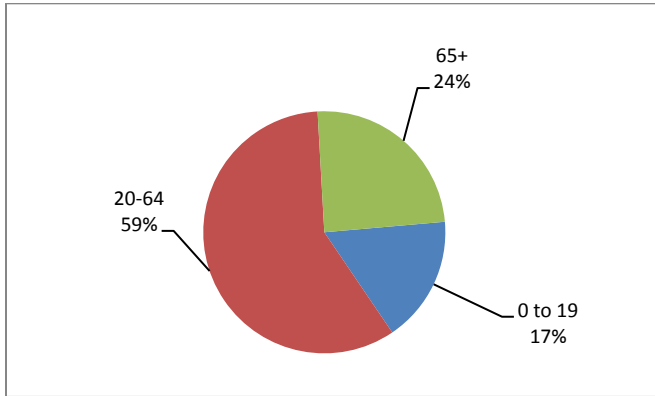
They provide recruitment assistance, job match services, custom and timely labor market information, training and wage incentives when available.

- ❖ 2 employers in Bloomfield were engaged by Capital Workforce Partners’ Business Services.
- ❖ 1 business was assisted with job placement.

Demographic and Workforce Overview

AGE DISTRIBUTION AND DEMOGRAPHICS

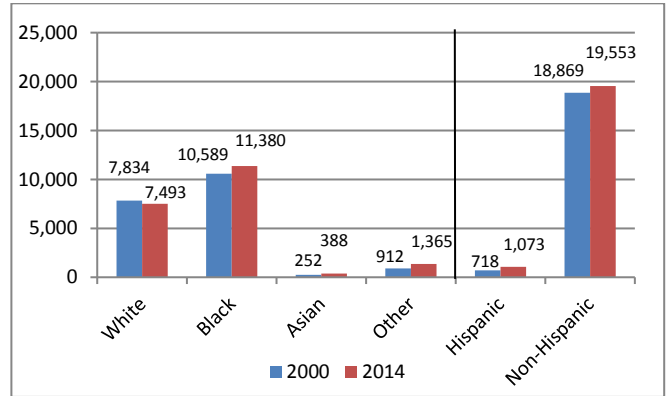
**Age Distribution
2014**



Source: US Census Bureau American Community Survey

The age distribution of the working population (20-64) is in line with Hartford County and the state. At 48, the median age is about eight years older than the county and state.

**Racial/Ethnic Composition Change
2000 to 2014**

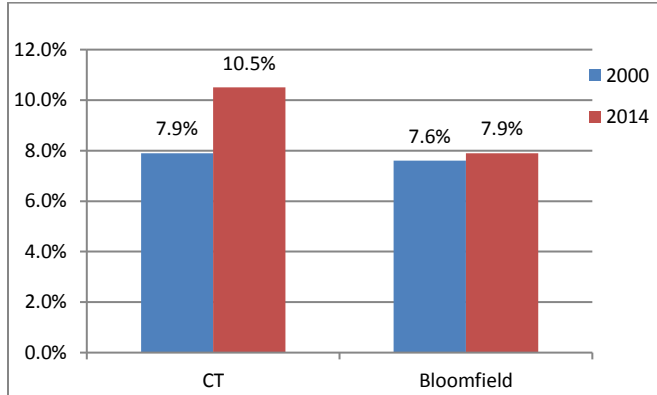


Source: US Census Bureau American Community Survey

The population is primarily a mix of the White and Black residents that identify as being Non-Hispanic. Since 2000, the population has grown by five percent.

POVERTY AND EDUCATIONAL ATTAINMENT

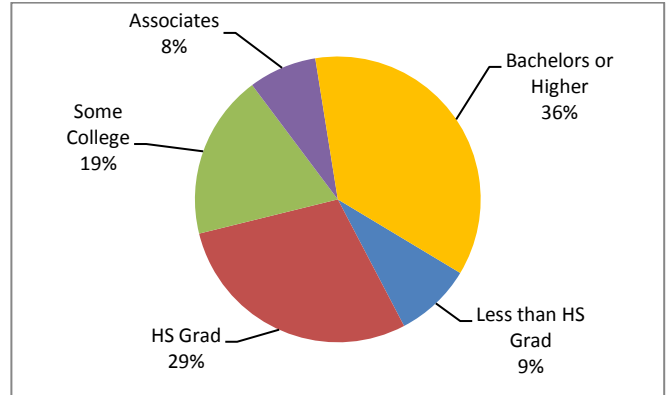
**Percent of Individuals with Income Below
Poverty Level
2000 to 2014**



Source: US Census Bureau American Community Survey

In 2014, at 7.9% for Individuals, the percentage in poverty is lower than the state; however, poverty has increased in Bloomfield and the state.

**Educational Attainment (aged 25+)
2014**

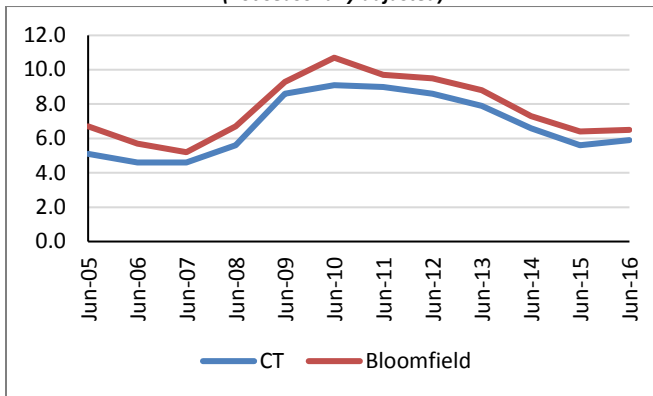


Source: US Census Bureau American Community Survey

The percentage of individuals with a Bachelors or Higher education is in line with the county and the state.

UNEMPLOYMENT RATES AND MEDIAN HOUSEHOLD INCOME

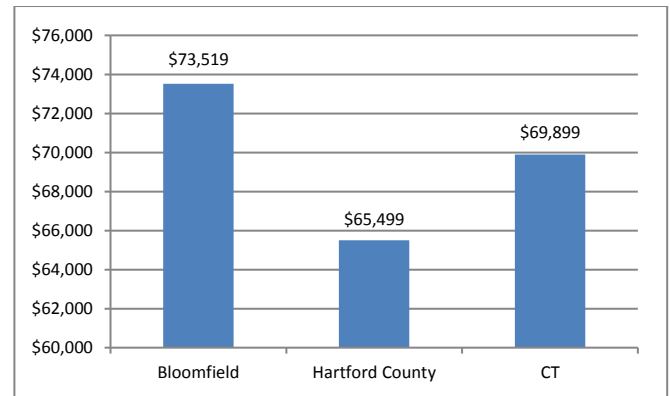
Unemployment Rate
2005 – June 2016
(not seasonally adjusted)



Source: CT Dept. of Labor

Over the past eleven years, from 2005 to 2016, the unemployment rate in Bloomfield has been consistently almost one percentage point higher than that of Connecticut.

Median Household Income
2014



Source: US Census Bureau American Community Survey

The median household income is \$73,519; this is over \$8,000 more than Hartford County and over \$3,000 more than the state.

LABOR MARKET PROFILE – June, 2016

	Bloomfield	% of Hartford County	Hartford County
Total Population	20,626	2.3%	897,374
Labor Force	11,545	2.4%	477,895
Employed	10,796	2.4%	447,905
Unemployed	749	2.5%	29,990
Unemployment Rate (1)	6.5%	NA	6.3%

(1) not seasonally adjusted

Source: US Census Bureau; CT Dept. of Labor

MAJOR EMPLOYERS

Cigna Corp.	Kaman Aerospace Corp.
Kamatics Corp.	Jacobs Vehicle Systems Inc.
Seabury Inc.	Otis Elevator Co.
Bloomfield Information Systems	JDS Uniphase Corp.
Cianbro Corp.	Home Goods Distribution Center

Source: CT Dept. of Labor; CT Data Collaborative



Capital Workforce Partners - One Union Place - Hartford, CT 06103
www.capitalworkforce.org