



**Capital Workforce Partners** (CWP) is one of five regional workforce development boards in the state. Its purpose is to close the gap between job seeker skills and business needs, and its mission is to leverage public and private resources to produce skilled workers for a competitive regional economy in 37 municipalities within North Central CT.

**Services Provided to Canton, Connecticut by Capital Workforce Partners  
July 1, 2016 – June 30, 2017**

**Adult Career Services**

**Services Overview 2016/2017 – 62 Individuals Served**

Overview	Program(s)	Individuals Served
<ul style="list-style-type: none"> <li>CWP oversees the operation of four in the regional American Job Centers in partnership with the State Dept. of Labor and other state agencies.</li> <li>These centers provide job seekers with a full array of career services.</li> </ul>	<ul style="list-style-type: none"> <li>Self-directed career services</li> <li>Workforce Innovation and Opportunity Act (WIOA)</li> <li>Jobs First (Welfare to Work)</li> <li>REACH (H1B)</li> <li>Jobs Funnel</li> </ul>	50 4 5 2 1

**Youth Services**

Capital Workforce Partners' Youth Programs provide resources to prepare youth and young adults ages 14 to 24 for careers and self-sufficiency through work experiences and training.

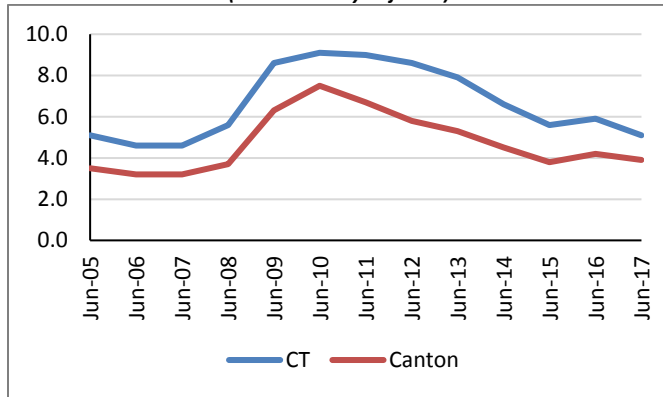
**Services Overview 2016/2017 – 1 Youth Served**

Program	Number Served
<ul style="list-style-type: none"> <li>Opportunity Youth Programs</li> </ul>	1

## Demographic and Workforce Overview

### Unemployment Rates And Median Household Income

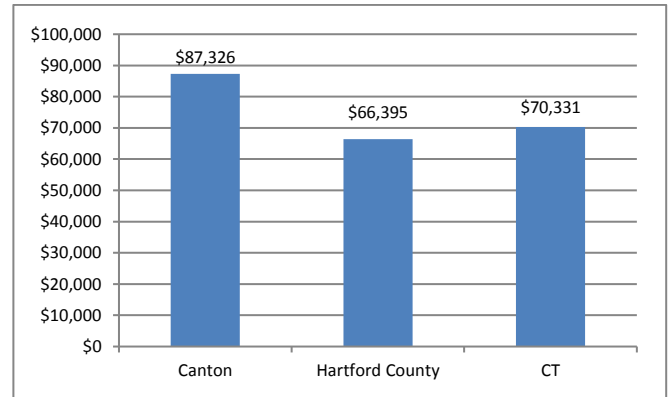
**Unemployment Rate  
2005 – June 2017**  
(not seasonally adjusted)



Source: CT Dept. of Labor

Over the past twelve years, from 2005 to 2017, the unemployment rate in Canton has been consistently about 1.0 to 2.5 percentage points lower than that of the state.

**Median Household Income  
2015**



Source: US Census Bureau American Community Survey

The median household income is \$87,326; this is nearly \$21,000 more than the county and nearly \$17,000 more than the state.

### Labor Market Profile – June, 2017

	Canton	% of Hartford County	Hartford County
Total Population	10,336	1.2%	896,943
Labor Force	5,815	1.2%	486,467
Employed	5,591	1.2%	460,606
Unemployed	224	0.9%	25,861
Unemployment Rate (1)	3.9%	NA	5.3%
Labor Force Participation Rate	67.3%	NA	67.1%

(1) not seasonally adjusted

Source: US Census Bureau; CT Dept. of Labor

### Major Employers

Shop Rite Supermarket	Cherry Brook Health Care Center
Favarh	Canton High School
Kohl's	Suburban Sanitation Service Inc.

Source: CT Dept. of Labor; CT Data Collaborative



Capital Workforce Partners - One Union Place - Hartford, CT 06103  
www.capitalworkforce.org