



**Capital Workforce Partners** (CWP) is one of five regional workforce development boards in the state. Its purpose is to close the gap between job seeker skills and business needs, and its mission is to leverage public and private resources to produce skilled workers for a competitive regional economy in 37 municipalities within North Central CT.

## Services Provided to Bolton, Connecticut by Capital Workforce Partners July 1, 2016 – June 30, 2017

### Adult Career Services

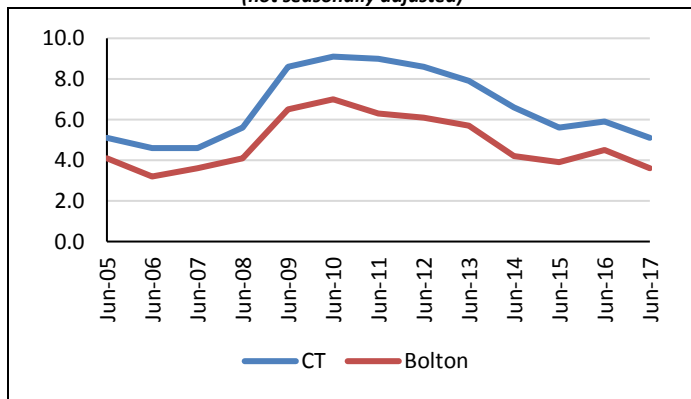
#### Services Overview 2016/2017 – 55 Individuals Served

Overview	Program(s)	Individuals Served
<ul style="list-style-type: none"> <li>CWP oversees the operation of four in the regional American Job Centers in partnership with the State Dept. of Labor and other state agencies.</li> <li>These centers provide job seekers with a full array of career services.</li> </ul>	<ul style="list-style-type: none"> <li>Self-directed career services</li> <li>Workforce Innovation and Opportunity Act (WIOA)</li> <li>Jobs First (Welfare to Work)</li> </ul>	<p>40</p> <p>11</p> <p>4</p>

### Demographic and Workforce Overview

#### Unemployment Rates and Median Household Income

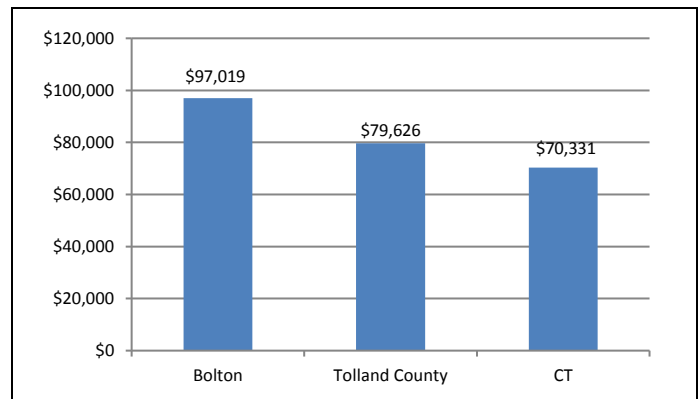
**Unemployment Rate  
2005 – June 2017**  
(not seasonally adjusted)



Source: CT Dept. of Labor

Over the past twelve years, from 2005 to 2017, the unemployment rate in Bolton has been about one to two percentage points lower than that of Connecticut.

**Median Household Income  
2015**



Source: US Census Bureau American Community Survey

The median household income is \$97,019; this is over \$17,000 more than the county and over \$26,000 more than the state.

### Labor Market Profile – June 2017

	Bolton	% of Tolland County	Tolland County
Total Population	4,959	3.3%	151,948
Labor Force	3,237	3.7%	87,777
Employed	3,121	3.7%	83,830
Unemployed	116	2.9%	3,947
Unemployment Rate (1)	3.6%	NA	4.5%
Labor Force Participation Rate	75.1%	NA	67.8%

(1) not seasonally adjusted

Source: US Census Bureau; CT Dept. of Labor

## Major Employers

Bolton Veterinarian Hospital	Larco Machine Co.
Bolton Public Schools	Net Source
Simoniz USA Inc.	Munson's Chocolates

*Source: CT Dept. of Labor; CT Data Collaborative*



**Capital Workforce Partners - One Union Place - Hartford, CT 06103**  
**[www.capitalworkforce.org](http://www.capitalworkforce.org)**