



Capital Workforce Partners (CWP) is one of five regional workforce development boards in the state. Its purpose is to close the gap between job seeker skills and business needs, and its mission is to leverage public and private resources to produce skilled workers for a competitive regional economy in 37 municipalities within North Central CT.

**Services Provided to Bristol, Connecticut by Capital Workforce Partners
July 1, 2016 – June 30, 2017**

Adult Career Services

Services Overview 2016/2017 – 1,055 Individuals Served

Overview	Program(s)	Individuals Served
<ul style="list-style-type: none"> CWP oversees the operation of four in the regional American Job Centers in partnership with the State Dept. of Labor and other state agencies. These centers provide job seekers with a full array of career services. 	• Self-directed career services	564
	• Workforce Innovation and Opportunity Act (WIOA)	76
	• Jobs First (Welfare to Work)	397
	• Second Chance ex-offender re-entry program	4
	• REACH (H1B)	8
	• STEP UP	4
	• Jobs Funnel	2

Business Services

Services Overview 2016/2017 – 13 Businesses Served

Overview	Partnership Sector Focus	Businesses Receiving Service*
<ul style="list-style-type: none"> Business Services helps businesses find the talent they need by connecting businesses to a large pool of job-ready talent, and act as a conduit to workforce related resources. Employer-focused programs and services help businesses find the skilled people they need to help support and/or grow their business. 	<ul style="list-style-type: none"> CWP convenes partnerships comprised of business leaders in three key sectors: healthcare, manufacturing, and construction. These business-led groups ensure that CWP and the workforce system are preparing job seekers to meet current and future business needs. 	13

* Includes businesses that have received hiring subsidies and hired CWP's customers.

Youth Services

Capital Workforce Partners' Youth Programs provide resources to prepare youth and young adults ages 14 to 24 for careers and self-sufficiency through work experiences and training.

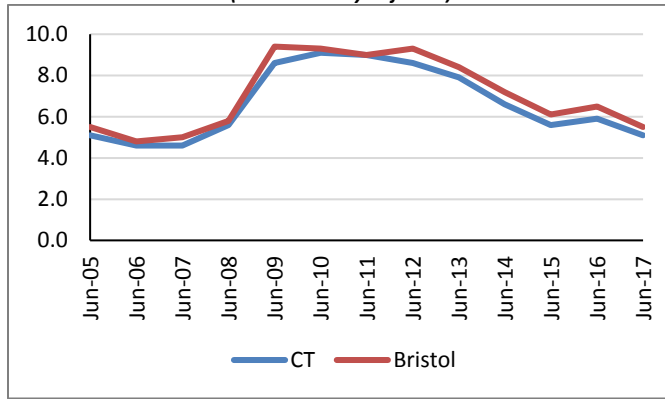
Services Overview 2016/2017 – 84 Youth Served

Program	Number Served
• Summer Youth/Year-Round Internship Program	46
• Opportunity Youth Programs	38

Demographic and Workforce Overview

Unemployment Rates And Median Household Income

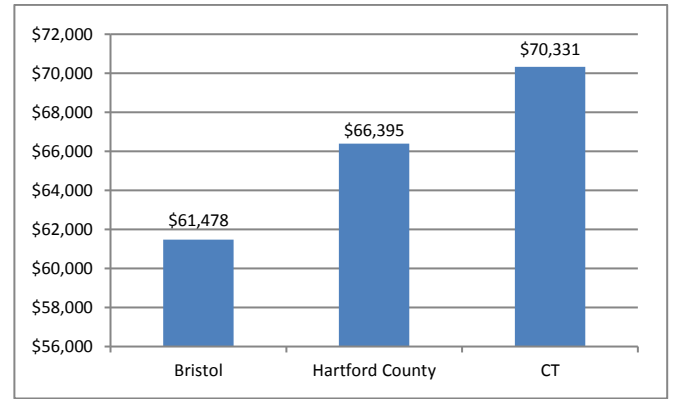
**Unemployment Rate
2005 – June 2017**
(not seasonally adjusted)



Source: CT Dept. of Labor

Over the past twelve years, from 2005 to 2017, the unemployment rate in Bristol has consistently been just under one percentage points higher than that of the state.

**Median Household Income
2015**



Source: US Census Bureau American Community Survey

The median household income is \$61,478; this is \$4,917 less than that of Hartford County, and \$8,853 less than that of Connecticut.

Labor Market Profile – June, 2017

	Bristol	% of Hartford County	Hartford County
Total Population	60,554	6.8%	896,943
Labor Force	33,685	6.9%	486,467
Employed	31,839	6.9%	460,606
Unemployed	1,846	7.1%	25,861
Unemployment Rate (1)	5.5%	NA	5.3%
Labor Force Participation Rate	68.3%	NA	67.1%

(1) not seasonally adjusted

Source: US Census Bureau; CT Dept. of Labor

Major Employers

ESPN	Barnes Group
Bristol Hospital	Bristol City Comptroller's Office
Johnson & Johnson	Lake Compounce

Source: CT Dept. of Labor; CT Data Collaborative



Capital Workforce Partners - One Union Place - Hartford, CT 06103
www.capitalworkforce.org