



Capital Workforce Partners (CWP) is one of five regional workforce development boards in the state. Its purpose is to close the gap between job seeker skills and business needs, and its mission is to leverage public and private resources to produce skilled workers for a competitive regional economy in 37 municipalities within North Central CT.

Services Provided to Andover, Connecticut by Capital Workforce Partners July 1, 2016 – June 30, 2017

Adult Career Services

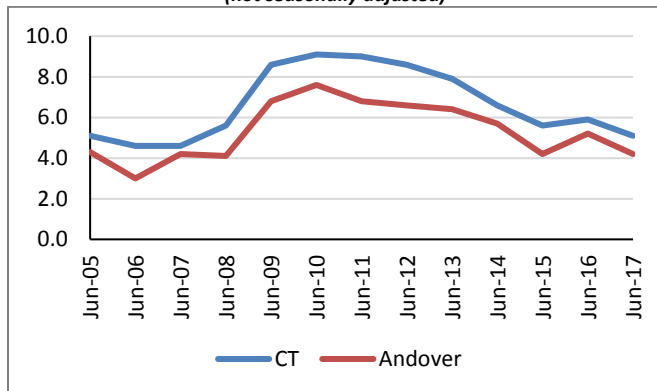
Services Overview 2016/2017 – 39 Individuals Served

Overview	Program(s)	Individuals Served
<ul style="list-style-type: none"> CWP oversees the operation of four in the regional American Job Centers in partnership with the State Dept. of Labor and other state agencies. These centers provide job seekers with a full array of career services. 	<ul style="list-style-type: none"> Self-directed career services Workforce Innovation and Opportunity Act (WIOA) Jobs First (Welfare to Work) Jobs Funnel 	<p>34</p> <p>3</p> <p>1</p> <p>1</p>

Demographic and Workforce Overview

Unemployment Rates and Median Household Income

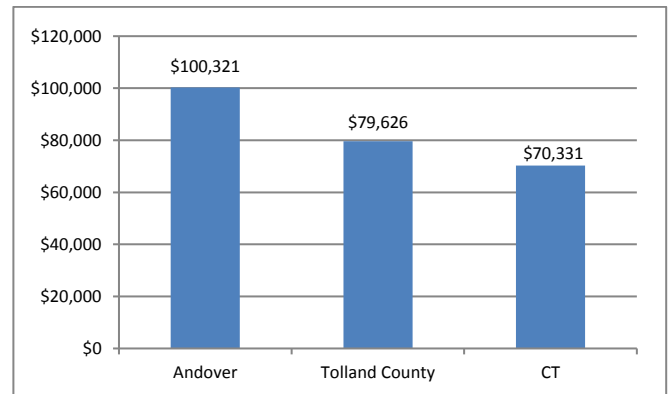
**Unemployment Rate
2005 – June 2017**
(not seasonally adjusted)



Source: CT Dept. of Labor

Over the past twelve years, from 2005 to 2017, the unemployment rate in Andover has been about one to two percentage points lower than that of the state.

**Median Household Income
2015**



Source: US Census Bureau American Community Survey

The median household income is \$100,321; this is over \$20,000 more than the county and nearly \$30,000 more than the state.

Labor Market Profile – June 2017

	Andover	% of Tolland County	Tolland County
Total Population	3,217	2.1%	151,948
Labor Force	1,981	2.3%	87,777
Employed	1,898	2.3%	83,830
Unemployed	83	2.1%	3,947
Unemployment Rate (1)	4.2%	NA	4.5%
Labor Force Participation Rate	69.6%	NA	67.8%

(1) not seasonally adjusted

Source: US Census Bureau; CT Dept. of Labor

Major Employers

Channel Three Kids Camp	Andover School District
Scott Electrocrafts Inc.	Andover Fire Dept.
Benjamin Franklin Plumbing	Town of Andover Town Hall
SDR Enterprises Inc.	MTM Corp.

Source: CT Dept. of Labor; CT Data Collaborative



Capital Workforce Partners - One Union Place - Hartford, CT 06103
www.capitalworkforce.org