



Capital Workforce Partners (CWP) is one of five regional workforce development boards in the state. Its purpose is to close the gap between job seeker skills and business needs, and its mission is to leverage public and private resources to produce skilled workers for a competitive regional economy in 37 municipalities within North Central CT.

**Services Provided to Berlin, Connecticut by Capital Workforce Partners
July 1, 2016 – June 30, 2017**

Adult Career Services

Services Overview 2016/2017 – 175 Individuals Served

Overview	Program(s)	Individuals Served
<ul style="list-style-type: none"> CWP oversees the operation of four in the regional American Job Centers in partnership with the State Dept. of Labor and other state agencies. These centers provide job seekers with a full array of career services. 	<ul style="list-style-type: none"> Self-directed career services Workforce Innovation and Opportunity Act (WIOA) Jobs First (Welfare to Work) REACH (H1B) STEP UP 	124 19 26 5 1

Business Services

Services Overview 2016/2017 – 8 Businesses Served

Overview	Partnership Sector Focus	Businesses Receiving Service*
<ul style="list-style-type: none"> Business Services helps businesses find the talent they need by connecting businesses to a large pool of job-ready talent, and act as a conduit to workforce related resources. Employer-focused programs and services help businesses find the skilled people they need to help support and/or grow their business. 	<ul style="list-style-type: none"> CWP convenes partnerships comprised of business leaders in three key sectors: healthcare, manufacturing, and construction. These business-led groups ensure that CWP and the workforce system are preparing job seekers to meet current and future business needs. 	8

* Includes businesses that have received hiring subsidies and hired CWP's customers.

Youth Services

Capital Workforce Partners' Youth Programs provide resources to prepare youth and young adults ages 14 to 24 for careers and self-sufficiency through work experiences and training.

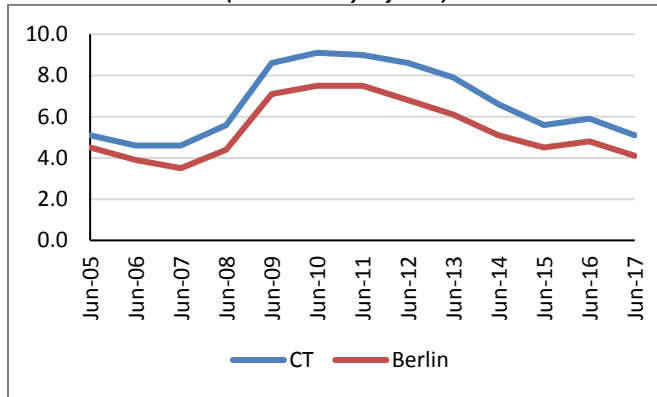
Services Overview 2016/2017 – 1 Youth Served

Program	Number Served
<ul style="list-style-type: none"> Summer Youth/Year-Round Internship Program 	1

Demographic and Workforce Overview

Unemployment Rates And Median Household Income

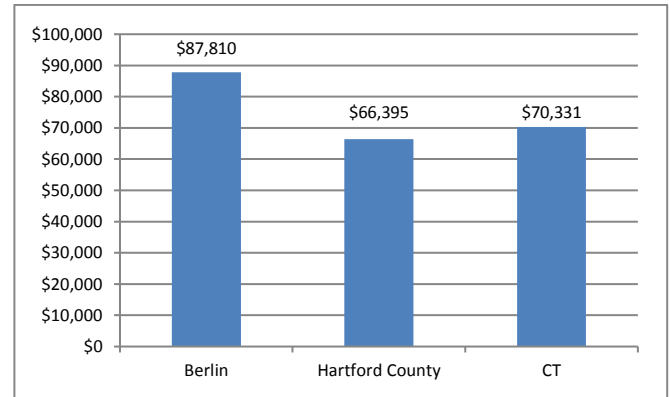
**Unemployment Rate
2005 – June 2017**
(not seasonally adjusted)



Source: CT Dept. of Labor

Over the past twelve years, from 2005 to 2017, the unemployment rate in Berlin has been consistently about one to two percentage points lower than that of the state.

**Median Household Income
2015**



Source: US Census Bureau American Community Survey

Median household income is \$87,810; this is over \$21,000 more than Hartford County and over \$17,000 more than the state.

Labor Market Profile – June, 2017

	Berlin	% of Hartford County	Hartford County
Total Population	20,486	2.3%	896,943
Labor Force	12,016	2.5%	486,467
Employed	11,527	2.5%	460,606
Unemployed	489	1.9%	25,861
Unemployment Rate (1)	4.1%	NA	5.3%
Labor Force Participation Rate	69.2%	NA	67.1%

(1) not seasonally adjusted

Source: US Census Bureau; CT Dept. of Labor

Major Employers

Corbin Russwin Inc.	Northeast Utilities/Eversource
Residential Management Svc Inc.	Berlin High School
Budney Industries Inc.	Home Depot Product Authority LLC
Grinnell Fire Protection Systems	Galecki Landscaping LLC
Simplex Grinnell	TIGHITCO Aerostructures Division Inc.
Fletcher-Terry Co LLC	New Britain Transportation Co.
Tomz Corp.	Stop & Shop Supermarket
Res-Tech Plastic Molding	

Source: CT Dept. of Labor; CT Data Collaborative



Capital Workforce Partners - One Union Place - Hartford, CT 06103
www.capitalworkforce.org