



Capital Workforce Partners (CWP) is one of five regional workforce development boards in the state. Its purpose is to close the gap between job seeker skills and business needs, and its mission is to leverage public and private resources to produce skilled workers for a competitive regional economy in 37 municipalities within North Central CT.

Services Provided to Avon, Connecticut by Capital Workforce Partners July 1, 2016 – June 30, 2017

Adult Career Services

Services Overview 2016/2017 – 112 Individuals Served

| Overview | Program(s) | Individuals Served |
|---|---|------------------------|
| <ul style="list-style-type: none"> • CWP oversees the operation of four in the regional American Job Centers in partnership with the State Dept. of Labor and other state agencies. • These centers provide job seekers with a full array of career services. | <ul style="list-style-type: none"> • Self-directed career services • Workforce Innovation and Opportunity Act (WIOA) • Jobs First (Welfare to Work) • REACH (H1B) • Mortgage Crisis Job Training Program | 94 7 7 1 3 |

Business Services

Services Overview 2016/2017 – 1 Business Served

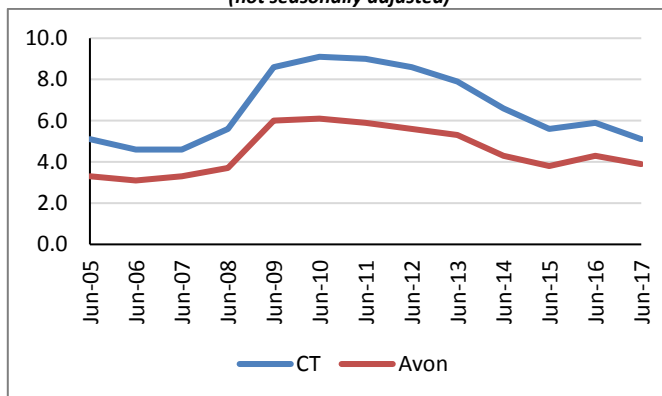
| Overview | Partnership Sector Focus | Businesses Receiving Service* |
|---|---|-------------------------------|
| <ul style="list-style-type: none"> • Business Services helps businesses find the talent they need by connecting businesses to a large pool of job-ready talent, and act as a conduit to workforce related resources. • Employer-focused programs and services help businesses find the skilled people they need to help support and/or grow their business. | <ul style="list-style-type: none"> • CWP convenes partnerships comprised of business leaders in three key sectors: healthcare, manufacturing, and construction. • These business-led groups ensure that CWP and the workforce system are preparing job seekers to meet current and future business needs. | 1 |

* Includes businesses that have received hiring subsidies and hired CWP's customers.

Demographic and Workforce Overview

Unemployment Rates And Median Household Income

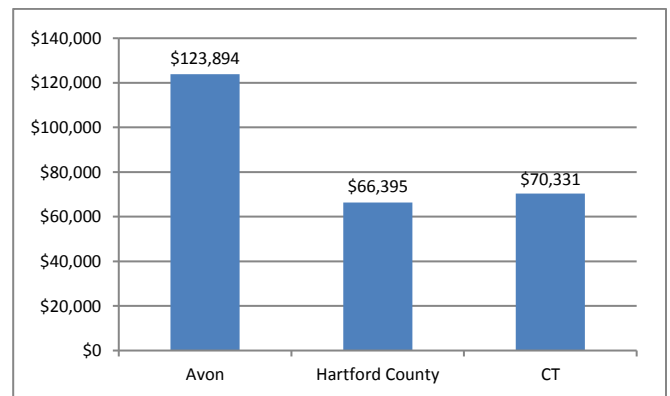
**Unemployment Rate
2005 – June 2017**
(not seasonally adjusted)



Source: CT Dept. of Labor

Over the past twelve years, from 2005 to 2017, the unemployment rate in Avon has been consistently about one to three percentage points lower than that of Connecticut.

**Median Household Income
2015**



Source: US Census Bureau American Community Survey

The median household income is \$123,894; this is over \$57,000 more than the county and over \$53,000 more than the state.

Labor Market Profile – June, 2017

| | Avon | % of Hartford County | Hartford County |
|--------------------------------|--------|----------------------|-----------------|
| Total Population | 18,335 | 2.0% | 896,943 |
| Labor Force | 9,613 | 2.0% | 486,467 |
| Employed | 9,235 | 2.0% | 460,606 |
| Unemployed | 378 | 1.5% | 25,861 |
| Unemployment Rate (1) | 3.9% | NA | 5.3% |
| Labor Force Participation Rate | 64.8% | NA | 67.1% |

(1) not seasonally adjusted

Source: US Census Bureau; CT Dept. of Labor

Major Employers

| | |
|---|--------------------|
| Center For Advanced Reproductive Services | Walmart |
| Physicians For Women's Health | Avon Health Center |
| Apple Health Care Inc. | ACI Worldwide Inc. |
| Town of Avon | Reflexite Corp. |
| OFS Specialty Photonics | Oldcastle Precast |
| Legere Group Ltd. | |

Source: CT Dept. of Labor; CT Data Collaborative



Capital Workforce Partners - One Union Place - Hartford, CT 06103
www.capitalworkforce.org